

CORS support in VO services

Thomas Boch
Trieste Interop, GWS1



□ What is CORS?

□ What is CORS?

- CORS: **C**ross **O**origin **R**esource **S**haring

□ What is CORS?

- CORS: **C**ross **O**origin **R**esource **S**haring
- W3C recommended standard
<https://www.w3.org/TR/cors/>

□ What is CORS?

- CORS: **C**ross **O**origin **R**esource **S**haring
- W3C recommended standard
<https://www.w3.org/TR/cors/>
- Enables cross-domain AJAX calls

□ What is CORS?

- CORS: **C**ross **O**origin **R**esource **S**haring
- W3C recommended standard
<https://www.w3.org/TR/cors/>
- Enables cross-domain AJAX calls
- By default, same-domain policy applies to AJAX calls

□ What is CORS?

- CORS: **C**ross **O**origin **R**esource **S**haring
- W3C recommended standard
<https://www.w3.org/TR/cors/>
- Enables cross-domain AJAX calls
- By default, same-domain policy applies to AJAX calls

```
var xhr = new XMLHttpRequest();  
xhr.open("GET", "http://ivoa.net/", true);  
xhr.send(null);
```

□ What is CORS?

- CORS: **C**ross **O**rigin **R**esource **S**haring
- W3C recommended standard
<https://www.w3.org/TR/cors/>
- Enables cross-domain AJAX calls
- By default, same-domain policy applies to AJAX calls

```
var xhr = new XMLHttpRequest();  
xhr.open("GET", "http://ivoa.net/", true);  
xhr.send(null);
```

⊗ XMLHttpRequest cannot load http://ivoa.net/. No 'Access-Control-Allow-Origin' header is present on the requested resource. Origin 'http://aladin.u-strasbg.fr' is therefore not allowed access.

□ Why do I care about this?

- Javascript widget querying VO services (CS, SIA, SSA, TAP)

□ Why do I care about this?

- Javascript widget querying VO services (CS, SIA, SSA, TAP)

M31

Chandra Observations | ROSAT Results Archive Sources for the HRI | ROSAT Archival Data
Suzaku Master Catalog | Swift XRT Instrument Log | NuSTAR Master Catalog
ROSAT Complete Results Archive Sources for the HRI | ROSAT Results Archive Sources for the PSPC
Swift UVOT Instrument Log | XMM-Newton Master Catalog & Public Archive | ASCA Master Catalog

Filter: 759 entries within radius 0.74°

SIA_reference	obsid	status	name	ra (degree)	dec (degree)	time (mjd)	detector	grating	exposure (s)	type	pi	publ
	243	archived	M31 - South 2	10.1125	40.67	51512.7254	HRC-I	NONE	1160.0	GTO	Murray	5
	243	archived	M31 - South 2	10.1125	40.67	51512.7254	HRC-I	NONE	1160.0	GTO	Murray	5
	245	archived	M31 - South 2	10.1125	40.67	51562.8648	HRC-I	NONE	1160.0	GTO	Murray	5
	245	archived	M31 - South 2	10.1125	40.67	51562.8648	HRC-I	NONE	1160.0	GTO	Murray	5
	246	archived	M31 - South 2	10.1125	40.67	51587.1627	HRC-I	NONE	1430.0	GTO	Murray	5
	246	archived	M31 - South 2	10.1125	40.67	51587.1627	HRC-I	NONE	1430.0	GTO	Murray	5
	247	archived	M31 - South 2	10.1125	40.67	51611.6837	HRC-I	NONE	2160.0	GTO	Murray	5
	247	archived	M31 - South 2	10.1125	40.67	51611.6837	HRC-I	NONE	2160.0	GTO	Murray	5
	248	archived	M31 - South 2	10.1125	40.67	51690.6571	HRC-I	NONE	1160.0	GTO	Murray	5
	248	archived	M31 - South 2	10.1125	40.67	51690.6571	HRC-I	NONE	1160.0	GTO	Murray	5
	249	archived	M31 - South 2	10.1125	40.67	51716.2378	HRC-I	NONE	1190.0	GTO	Murray	5

759 entries within radius 0.74°

TAP service

SSA service

CS service

SIA service

SIA service

CS service

□ Why do I care about this?

- Javascript widget querying VO services (CS, SIA, SSA, TAP)

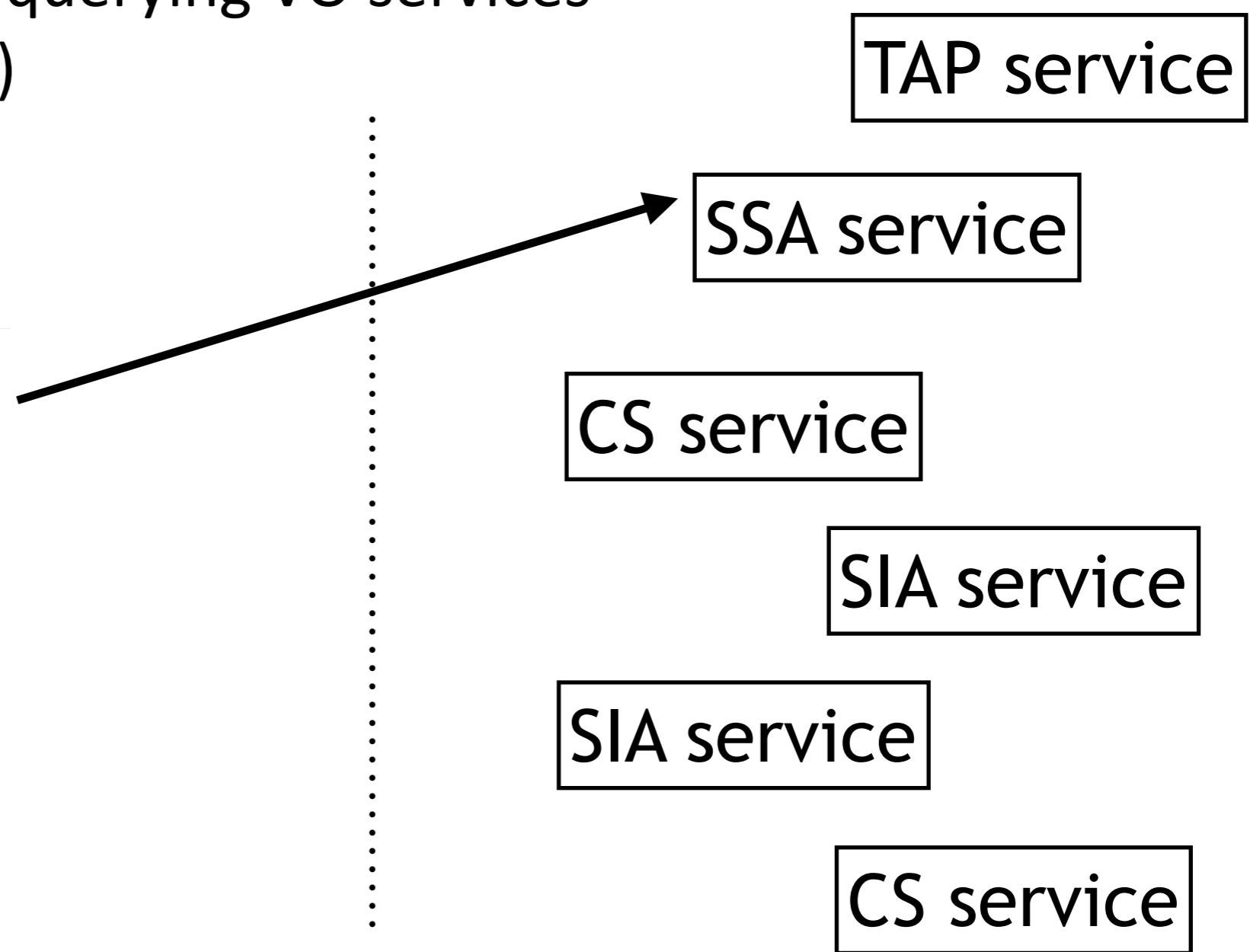
M31

Chandra Observations | ROSAT Results Archive Sources for the HRI | ROSAT Archival Data
Suzaku Master Catalog | Swift XRT Instrument Log | NuSTAR Master Catalog
ROSAT Complete Results Archive Sources for the HRI | ROSAT Results Archive Sources for the PSPC
Swift UVOT Instrument Log | XMM-NewtonMasterLog&PublicArchive | ASCA Master Catalog

Filter: 759 entries within radius 0.74°

SIA_reference	obsid	status	name	ra (degree)	dec (degree)	time (mjd)	detector	grating	exposure (s)	type	pi	publ
	243	archived	M31 - South 2	10.1125	40.67	51512.7254	HRC-I	NONE	1160.0	GTO	Murray	5
	243	archived	M31 - South 2	10.1125	40.67	51512.7254	HRC-I	NONE	1160.0	GTO	Murray	5
	245	archived	M31 - South 2	10.1125	40.67	51562.8648	HRC-I	NONE	1160.0	GTO	Murray	5
	245	archived	M31 - South 2	10.1125	40.67	51562.8648	HRC-I	NONE	1160.0	GTO	Murray	5
	246	archived	M31 - South 2	10.1125	40.67	51587.1627	HRC-I	NONE	1430.0	GTO	Murray	5
	246	archived	M31 - South 2	10.1125	40.67	51587.1627	HRC-I	NONE	1430.0	GTO	Murray	5
	247	archived	M31 - South 2	10.1125	40.67	51611.6837	HRC-I	NONE	2160.0	GTO	Murray	5
	247	archived	M31 - South 2	10.1125	40.67	51611.6837	HRC-I	NONE	2160.0	GTO	Murray	5
	248	archived	M31 - South 2	10.1125	40.67	51690.6571	HRC-I	NONE	1160.0	GTO	Murray	5
	248	archived	M31 - South 2	10.1125	40.67	51690.6571	HRC-I	NONE	1160.0	GTO	Murray	5
	249	archived	M31 - South 2	10.1125	40.67	51716.2378	HRC-I	NONE	1190.0	GTO	Murray	5

759 entries within radius 0.74°



□ Why do I care about this?

- Javascript widget querying VO services (CS, SIA, SSA, TAP)

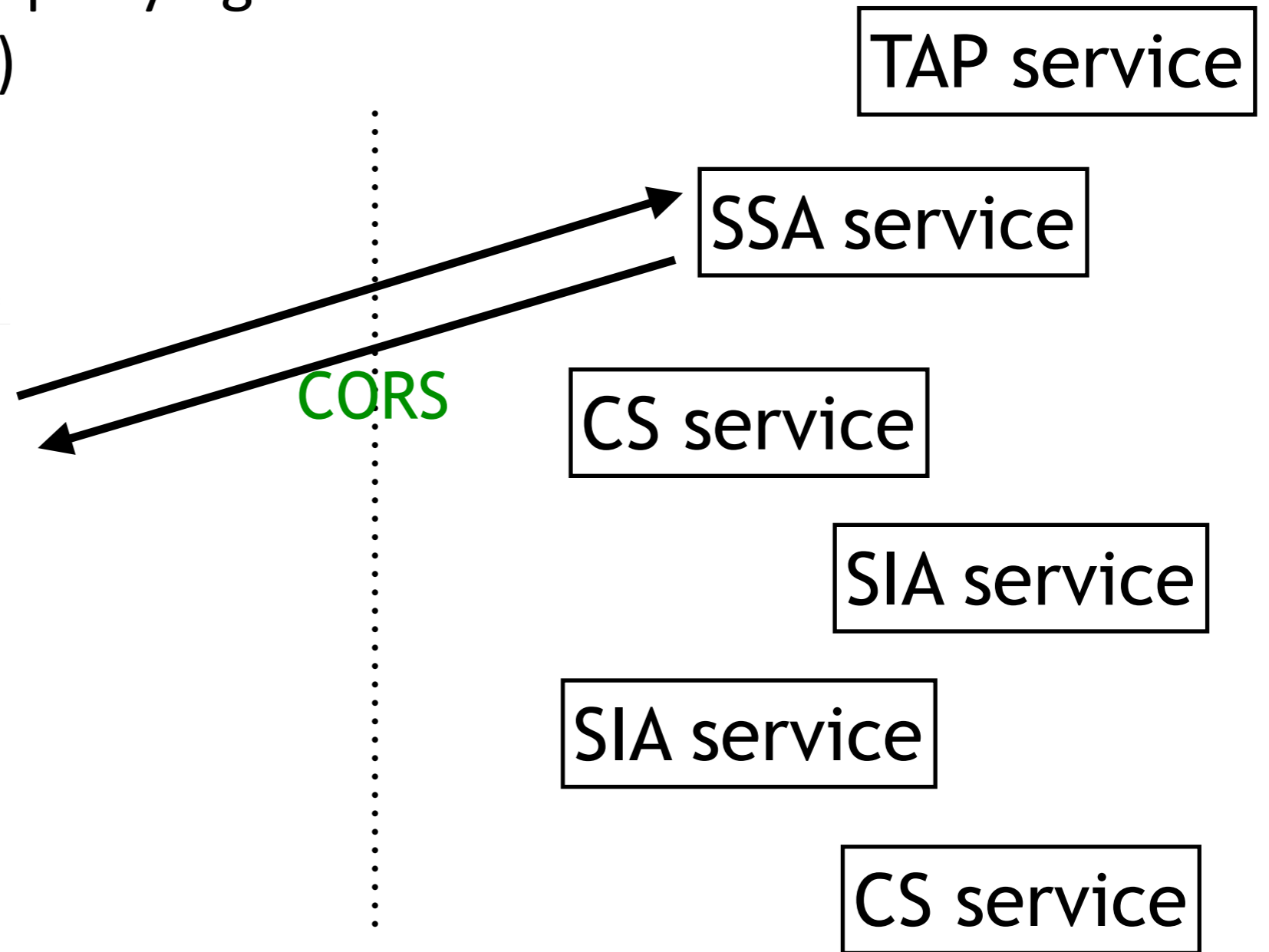
M31

Chandra Observations | ROSAT Results Archive Sources for the HRI | ROSAT Archival Data
Suzaku Master Catalog | Swift XRT Instrument Log | NuSTAR Master Catalog
ROSAT Complete Results Archive Sources for the HRI | ROSAT Results Archive Sources for the PSPC
Swift UVOT Instrument Log | XMM-NewtonMasterLog&PublicArchive | ASCA Master Catalog

Filter: 759 entries within radius 0.74°

SIA_reference	obsid	status	name	ra (degree)	dec (degree)	time (mjd)	detector	grating	exposure (s)	type	pi	publ
	243	archived	M31 - South 2	10.1125	40.67	51512.7254	HRC-I	NONE	1160.0	GTO	Murray	5
	243	archived	M31 - South 2	10.1125	40.67	51512.7254	HRC-I	NONE	1160.0	GTO	Murray	5
	245	archived	M31 - South 2	10.1125	40.67	51562.8648	HRC-I	NONE	1160.0	GTO	Murray	5
	245	archived	M31 - South 2	10.1125	40.67	51562.8648	HRC-I	NONE	1160.0	GTO	Murray	5
	246	archived	M31 - South 2	10.1125	40.67	51587.1627	HRC-I	NONE	1430.0	GTO	Murray	5
	246	archived	M31 - South 2	10.1125	40.67	51587.1627	HRC-I	NONE	1430.0	GTO	Murray	5
	247	archived	M31 - South 2	10.1125	40.67	51611.6837	HRC-I	NONE	2160.0	GTO	Murray	5
	247	archived	M31 - South 2	10.1125	40.67	51611.6837	HRC-I	NONE	2160.0	GTO	Murray	5
	248	archived	M31 - South 2	10.1125	40.67	51690.6571	HRC-I	NONE	1160.0	GTO	Murray	5
	248	archived	M31 - South 2	10.1125	40.67	51690.6571	HRC-I	NONE	1160.0	GTO	Murray	5
	249	archived	M31 - South 2	10.1125	40.67	51716.2378	HRC-I	NONE	1190.0	GTO	Murray	5

759 entries within radius 0.74°



□ Why do I care about this?

- Javascript widget querying VO services (CS, SIA, SSA, TAP)

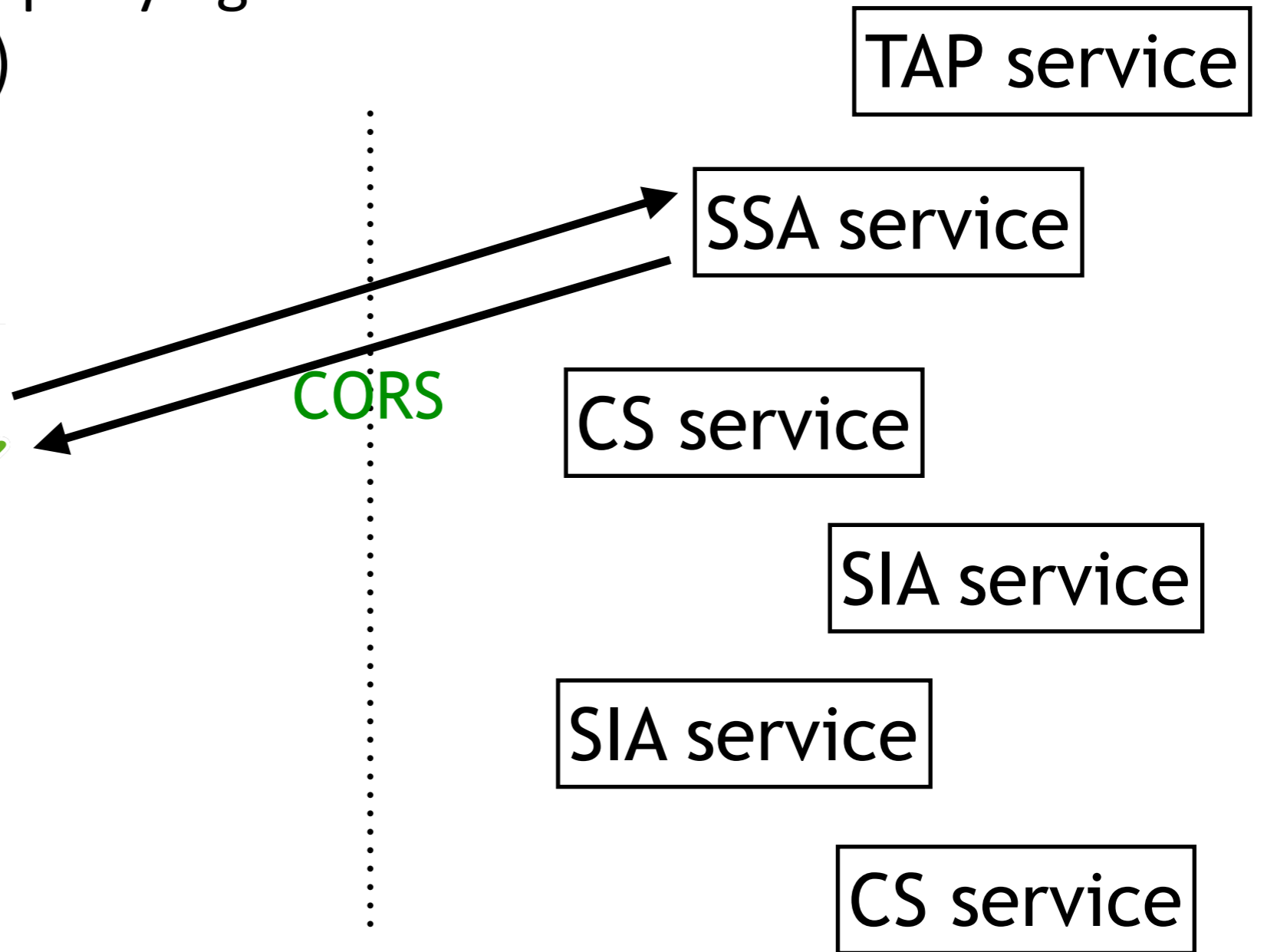
M31

Chandra Observations | ROSAT Results Archive Sources for the HRI | ROSAT Archival Data
Suzaku Master Catalog | Swift XRT Instrument Log | NuSTAR Master Catalog
ROSAT Complete Results Archive Sources for the HRI | ROSAT Results Archive Sources for the PSPC
Swift UVOT Instrument Log | XMM-NewtonMasterLog&PublicArchive | ASCA Master Catalog

Filter: 759 entries within radius 0.74°

SIA_reference	obsid	status	name	ra (degree)	dec (degree)	time (mjd)	detector	grating	exposure (s)	type	pi
	243	archived	M31 - South 2	10.1125	40.67	51512.7254	HRC-I	NONE	1160.0	GTO	5
	243	archived	M31 - South 2	10.1125	40.67	51512.7254	HRC-I	NONE	1160.0	GTO	Murray
	245	archived	M31 - South 2	10.1125	40.67	51562.8648	HRC-I	NONE	1160.0	GTO	Murray
	245	archived	M31 - South 2	10.1125	40.67	51562.8648	HRC-I	NONE	1160.0	GTO	Murray
	246	archived	M31 - South 2	10.1125	40.67	51587.1627	HRC-I	NONE	1430.0	GTO	Murray
	246	archived	M31 - South 2	10.1125	40.67	51587.1627	HRC-I	NONE	1430.0	GTO	Murray
	247	archived	M31 - South 2	10.1125	40.67	51611.6837	HRC-I	NONE	2160.0	GTO	Murray
	247	archived	M31 - South 2	10.1125	40.67	51611.6837	HRC-I	NONE	2160.0	GTO	Murray
	248	archived	M31 - South 2	10.1125	40.67	51690.6571	HRC-I	NONE	1160.0	GTO	Murray
	248	archived	M31 - South 2	10.1125	40.67	51690.6571	HRC-I	NONE	1160.0	GTO	Murray
	249	archived	M31 - South 2	10.1125	40.67	51716.2378	HRC-I	NONE	1190.0	GTO	Murray

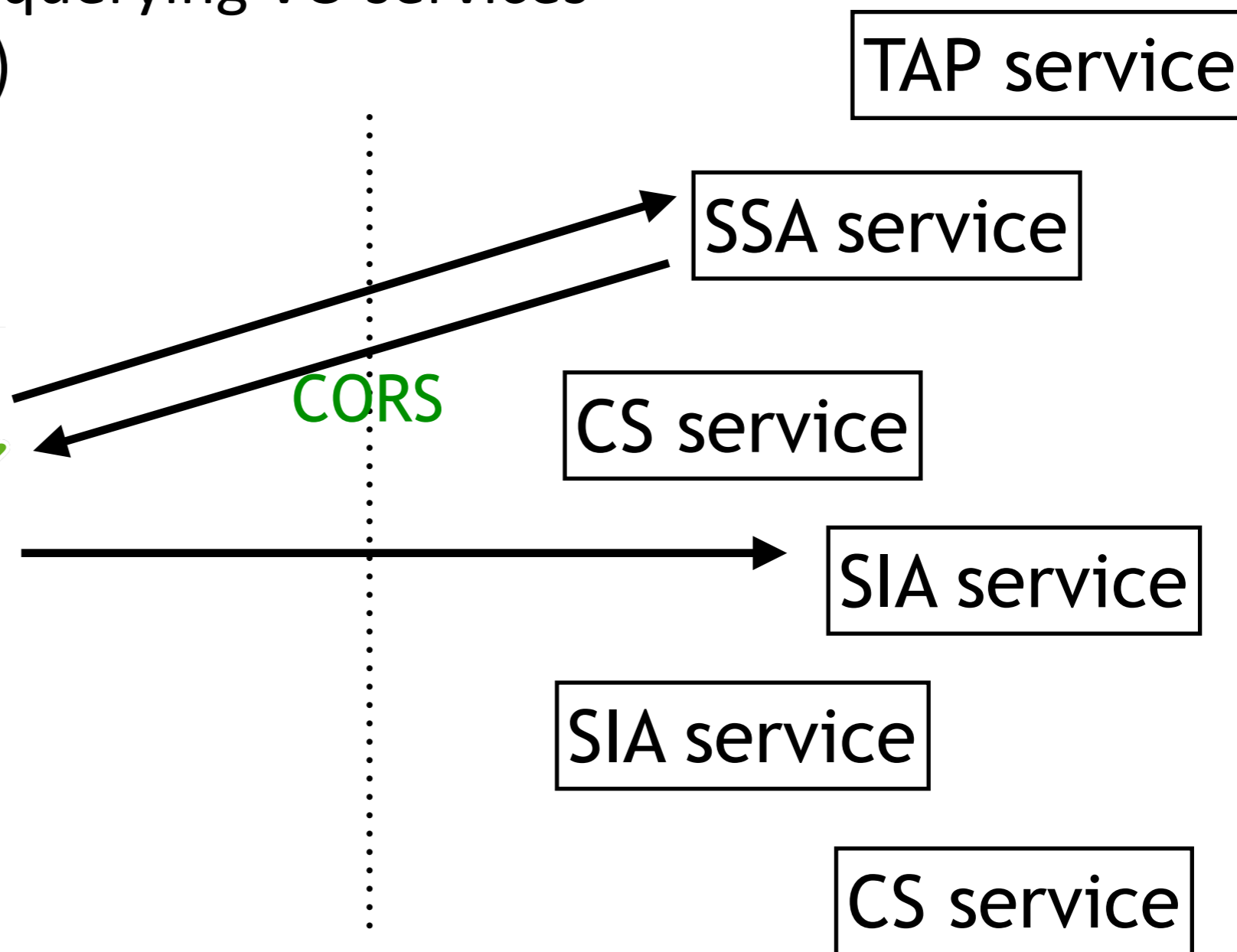
759 entries within radius 0.74°



□ Why do I care about this?

- Javascript widget querying VO services (CS, SIA, SSA, TAP)

SIA_reference	obsid	status	name	ra (degree)	dec (degree)	time (mjd)	detector	grating	exposure (s)	type	pi
image	243	archived	M31 - South 2	10.1125	40.67	51512.7254	HRC-I	NONE	1160.0	GTO	Murray
image	243	archived	M31 - South 2	10.1125	40.67	51512.7254	HRC-I	NONE	1160.0	GTO	Murray
image	245	archived	M31 - South 2	10.1125	40.67	51562.8648	HRC-I	NONE	1160.0	GTO	Murray
image	245	archived	M31 - South 2	10.1125	40.67	51562.8648	HRC-I	NONE	1160.0	GTO	Murray
image	246	archived	M31 - South 2	10.1125	40.67	51587.1627	HRC-I	NONE	1430.0	GTO	Murray
image	246	archived	M31 - South 2	10.1125	40.67	51587.1627	HRC-I	NONE	1430.0	GTO	Murray
image	247	archived	M31 - South 2	10.1125	40.67	51611.6837	HRC-I	NONE	2160.0	GTO	Murray
image	247	archived	M31 - South 2	10.1125	40.67	51611.6837	HRC-I	NONE	2160.0	GTO	Murray
image	248	archived	M31 - South 2	10.1125	40.67	51690.6571	HRC-I	NONE	1160.0	GTO	Murray
image	248	archived	M31 - South 2	10.1125	40.67	51690.6571	HRC-I	NONE	1160.0	GTO	Murray
image	249	archived	M31 - South 2	10.1125	40.67	51716.2378	HRC-I	NONE	1190.0	GTO	Murray



□ Why do I care about this?

- Javascript widget querying VO services (CS, SIA, SSA, TAP)

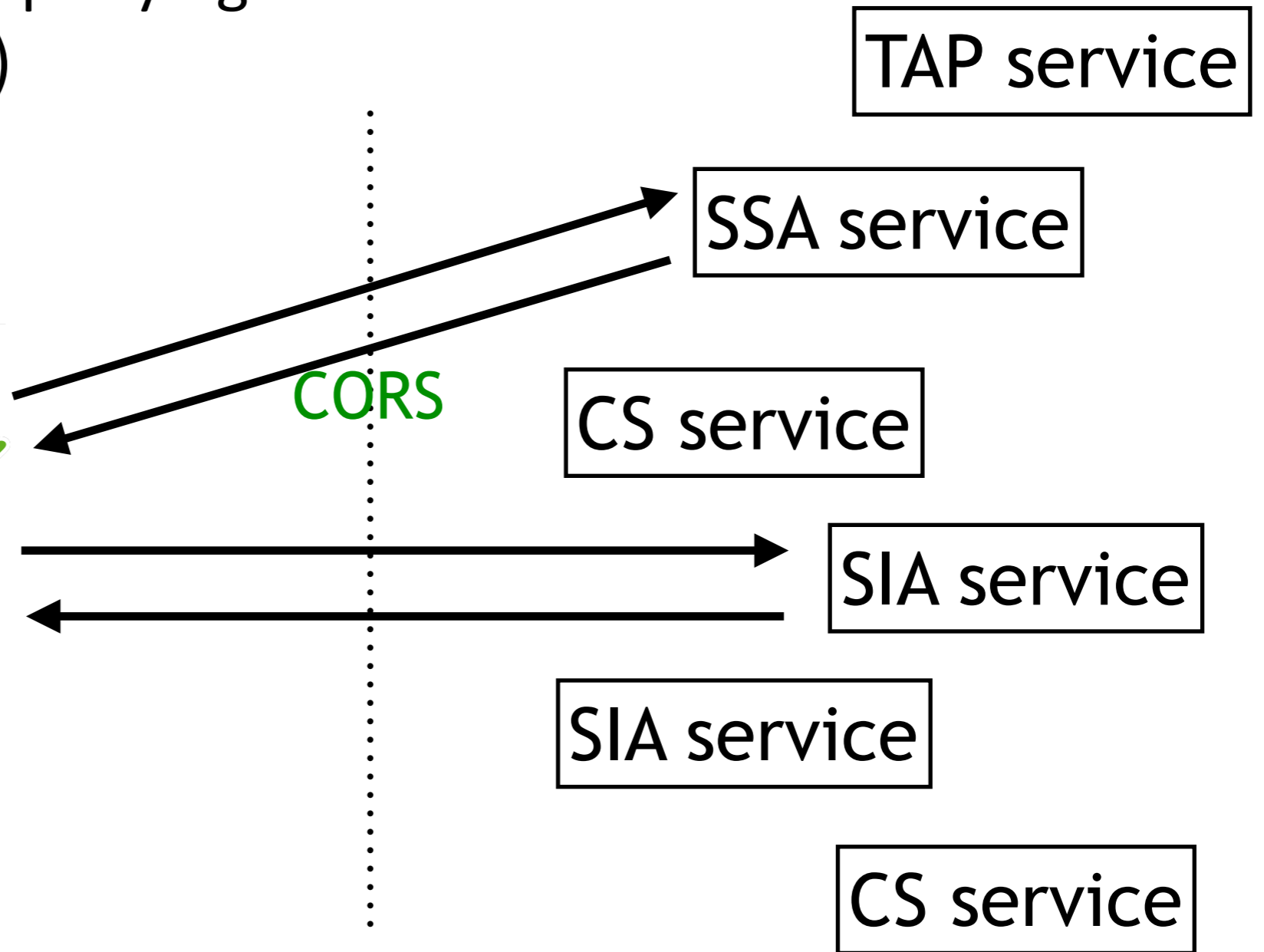
M31

Chandra Observations | ROSAT Results Archive Sources for the HRI | ROSAT Archival Data
Suzaku Master Catalog | Swift XRT Instrument Log | NuSTAR Master Catalog
ROSAT Complete Results Archive Sources for the HRI | ROSAT Results Archive Sources for the PSPC
Swift UVOT Instrument Log | XMM-NewtonMasterLog&PublicArchive | ASCA Master Catalog

Filter: 759 entries within radius 0.74°

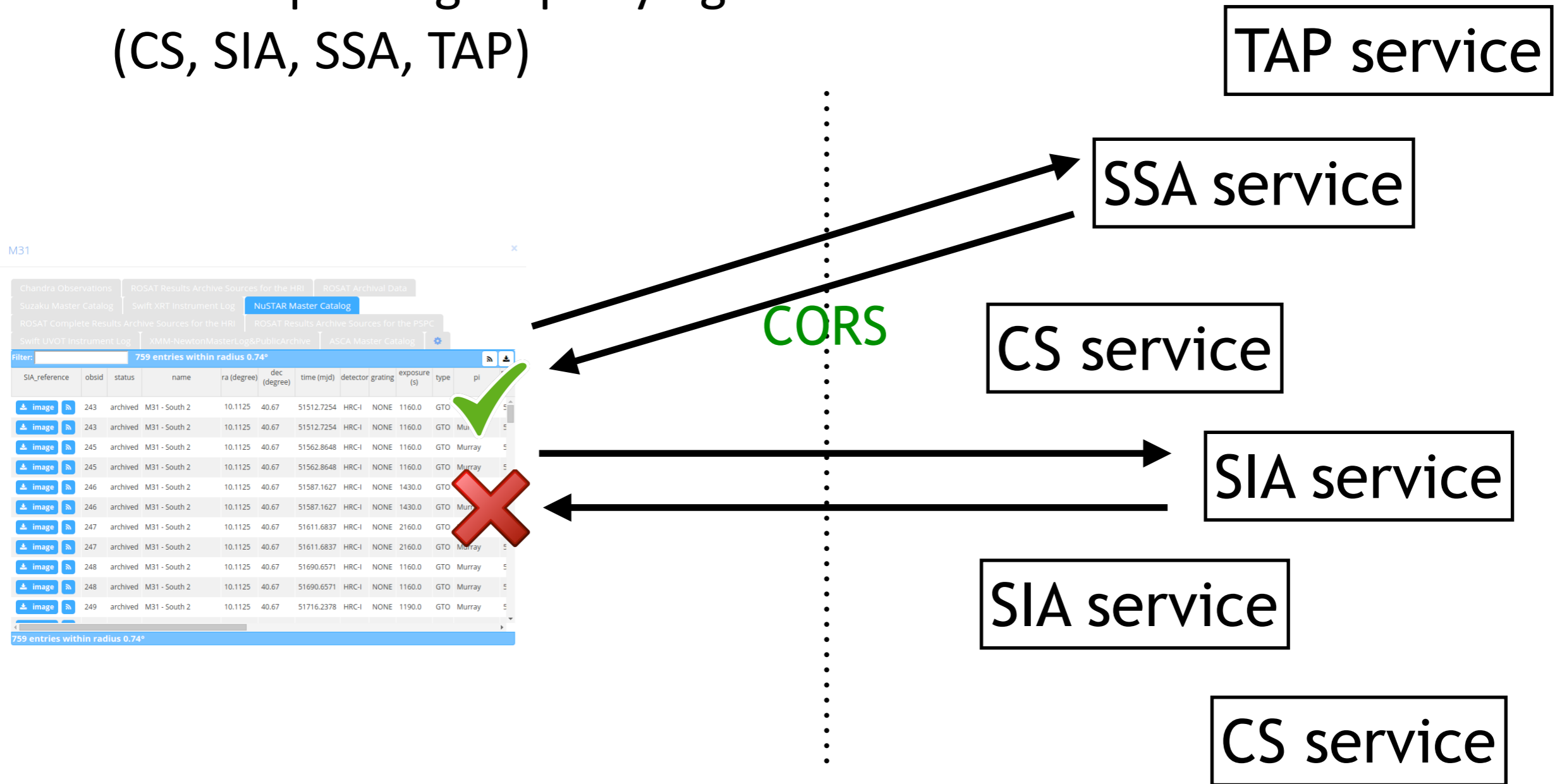
SIA_reference	obsid	status	name	ra (degree)	dec (degree)	time (mjd)	detector	grating	exposure (s)	type	pi
	243	archived	M31 - South 2	10.1125	40.67	51512.7254	HRC-I	NONE	1160.0	GTO	5
	243	archived	M31 - South 2	10.1125	40.67	51512.7254	HRC-I	NONE	1160.0	GTO	Murray
	245	archived	M31 - South 2	10.1125	40.67	51562.8648	HRC-I	NONE	1160.0	GTO	Murray
	245	archived	M31 - South 2	10.1125	40.67	51562.8648	HRC-I	NONE	1160.0	GTO	Murray
	246	archived	M31 - South 2	10.1125	40.67	51587.1627	HRC-I	NONE	1430.0	GTO	Murray
	246	archived	M31 - South 2	10.1125	40.67	51587.1627	HRC-I	NONE	1430.0	GTO	Murray
	247	archived	M31 - South 2	10.1125	40.67	51611.6837	HRC-I	NONE	2160.0	GTO	Murray
	247	archived	M31 - South 2	10.1125	40.67	51611.6837	HRC-I	NONE	2160.0	GTO	Murray
	248	archived	M31 - South 2	10.1125	40.67	51690.6571	HRC-I	NONE	1160.0	GTO	Murray
	248	archived	M31 - South 2	10.1125	40.67	51690.6571	HRC-I	NONE	1160.0	GTO	Murray
	249	archived	M31 - South 2	10.1125	40.67	51716.2378	HRC-I	NONE	1190.0	GTO	Murray

759 entries within radius 0.74°



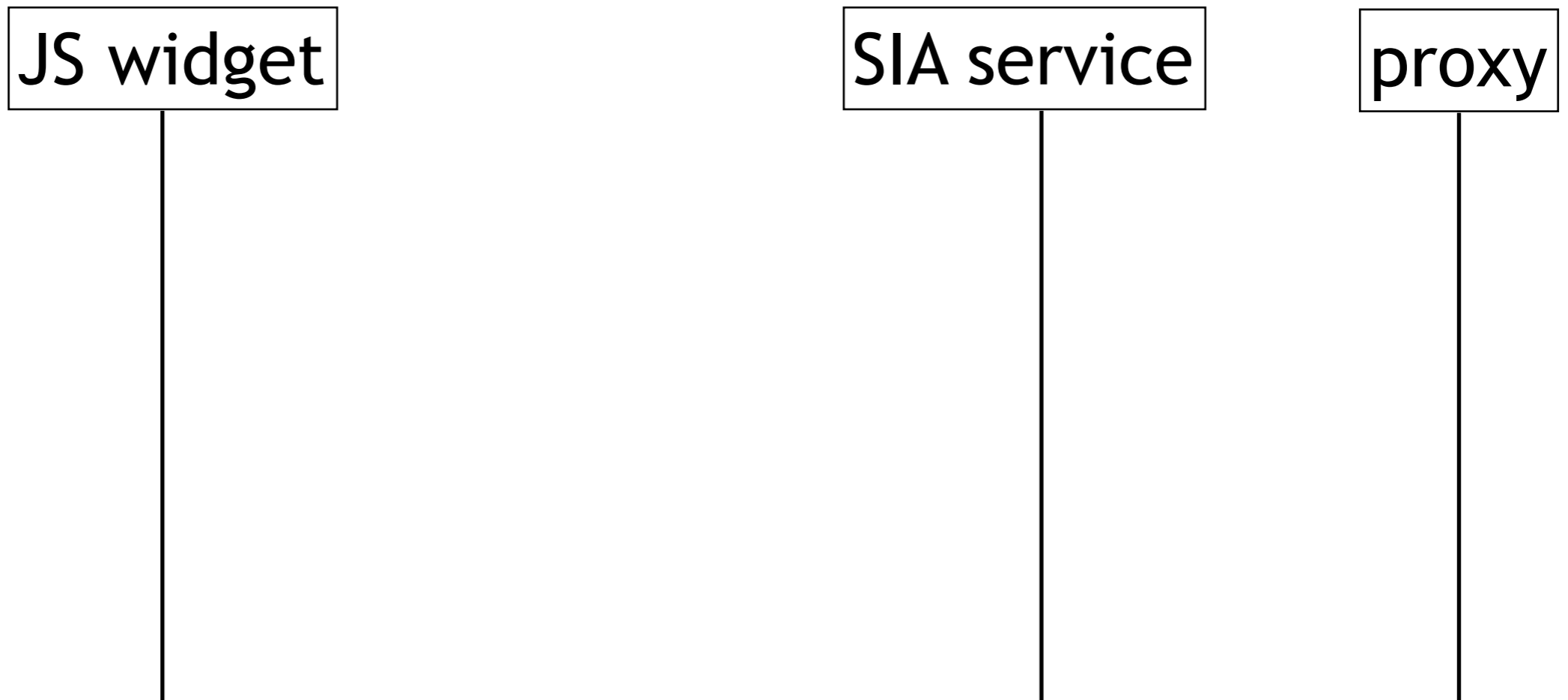
□ Why do I care about this?

- Javascript widget querying VO services (CS, SIA, SSA, TAP)



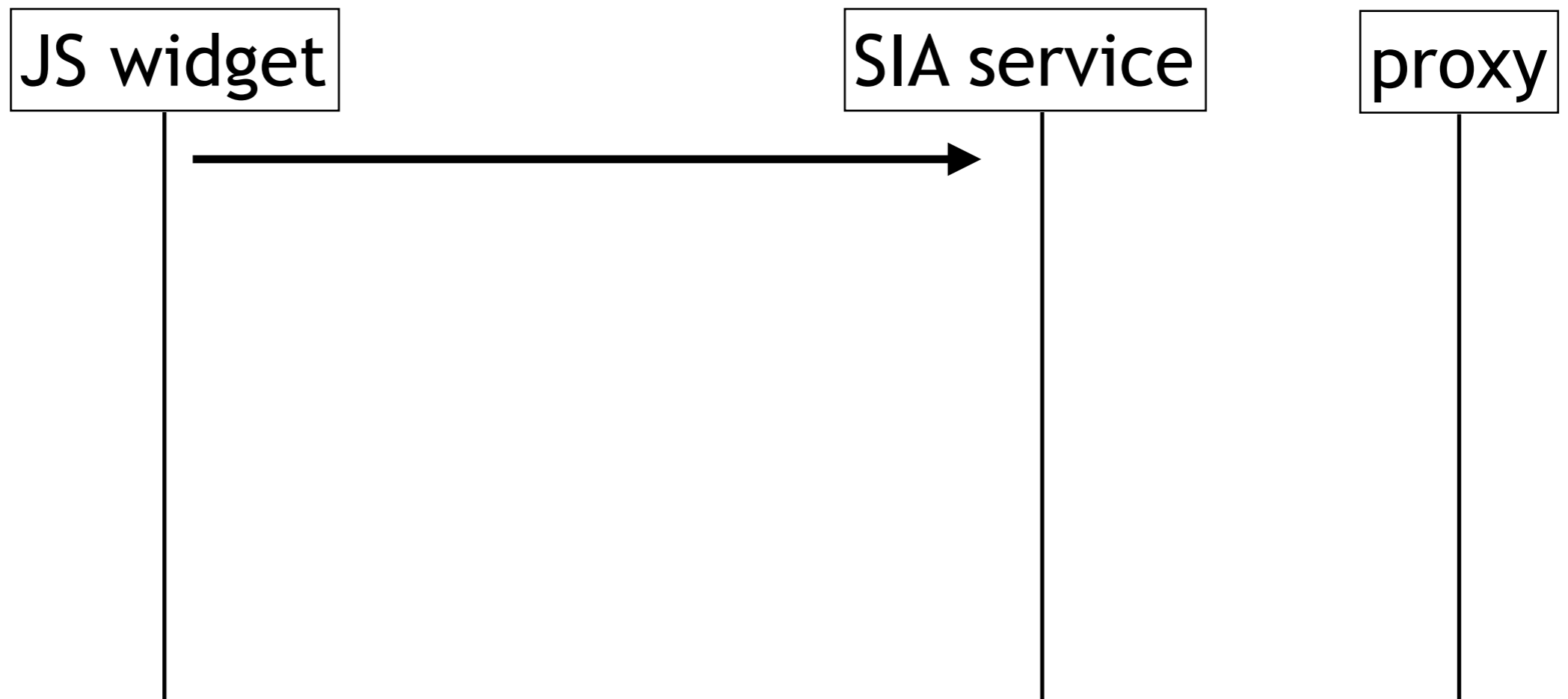
□ Overcoming same-domain limitation

- Retrieve data through a **proxy**



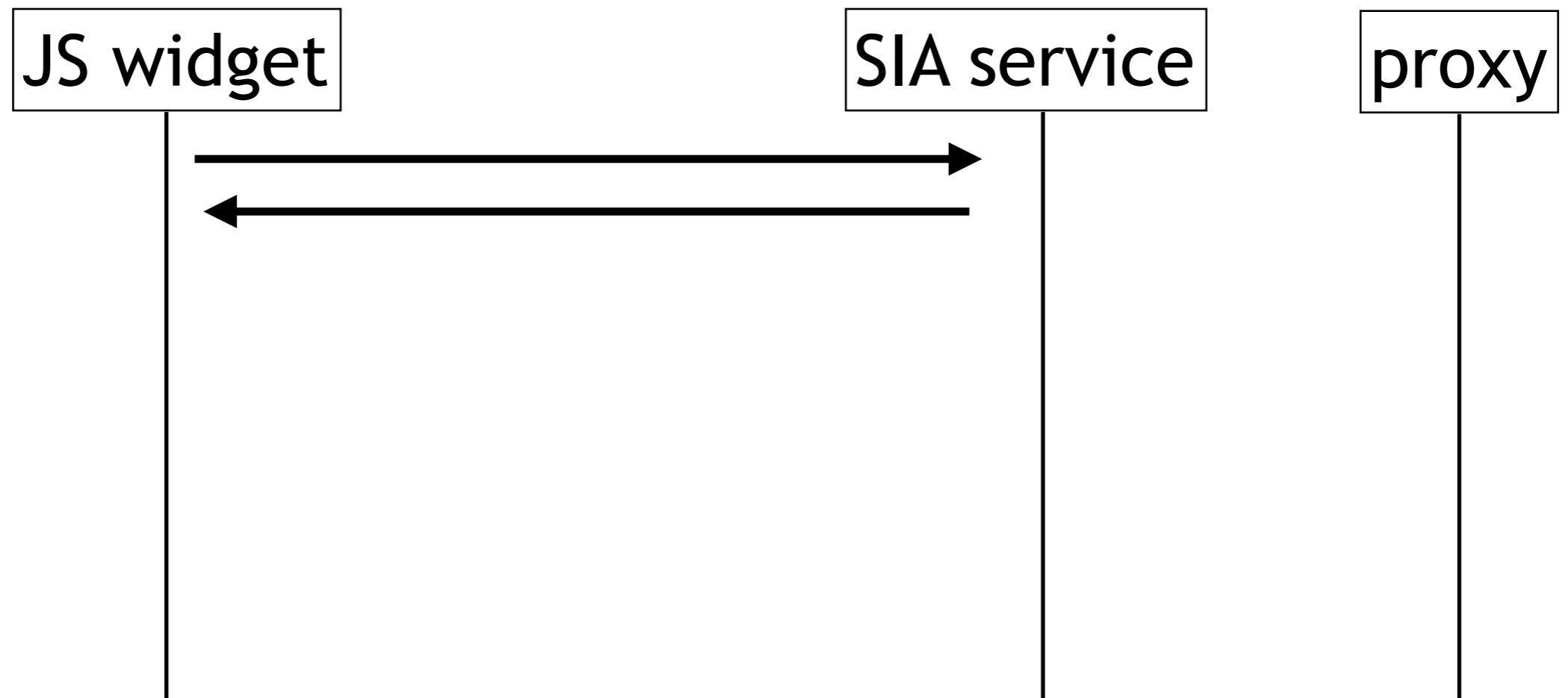
□ Overcoming same-domain limitation

- Retrieve data through a **proxy**



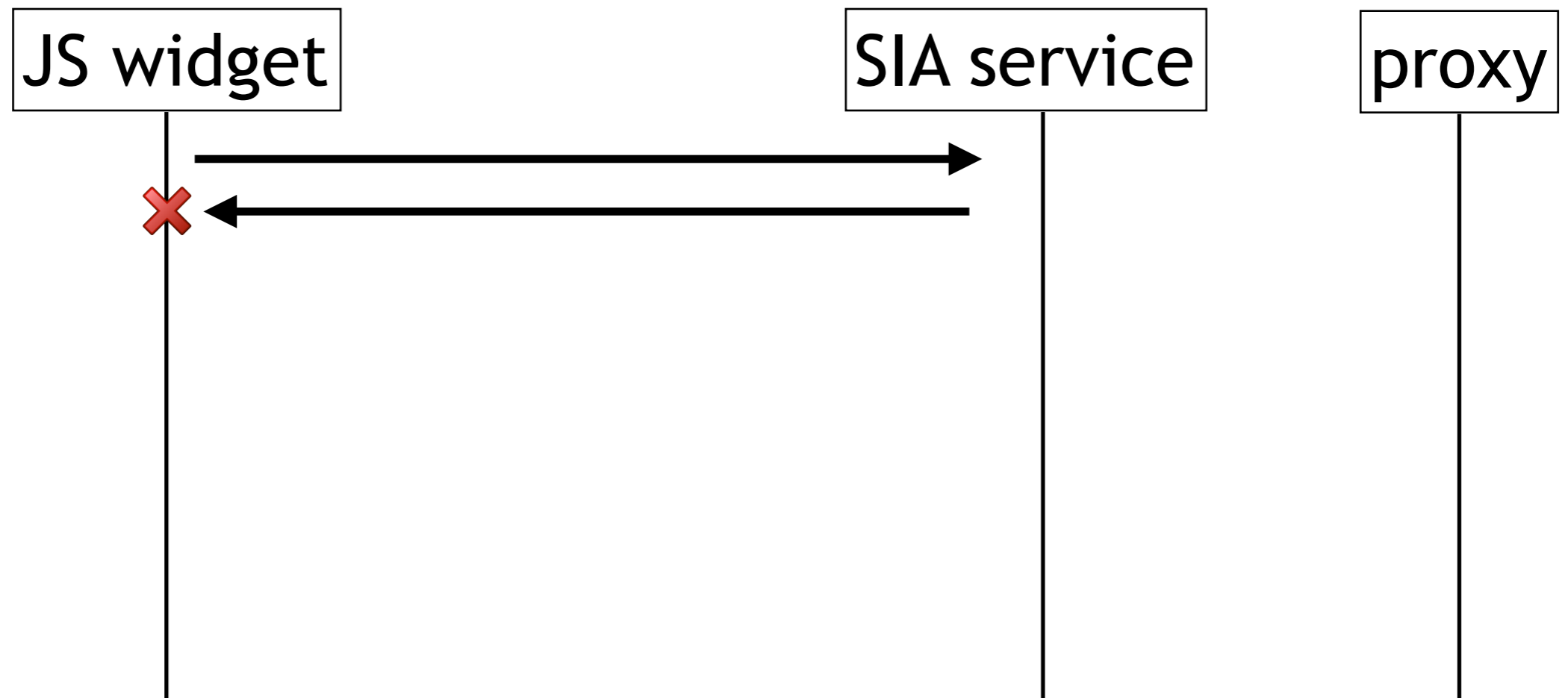
□ Overcoming same-domain limitation

- Retrieve data through a **proxy**



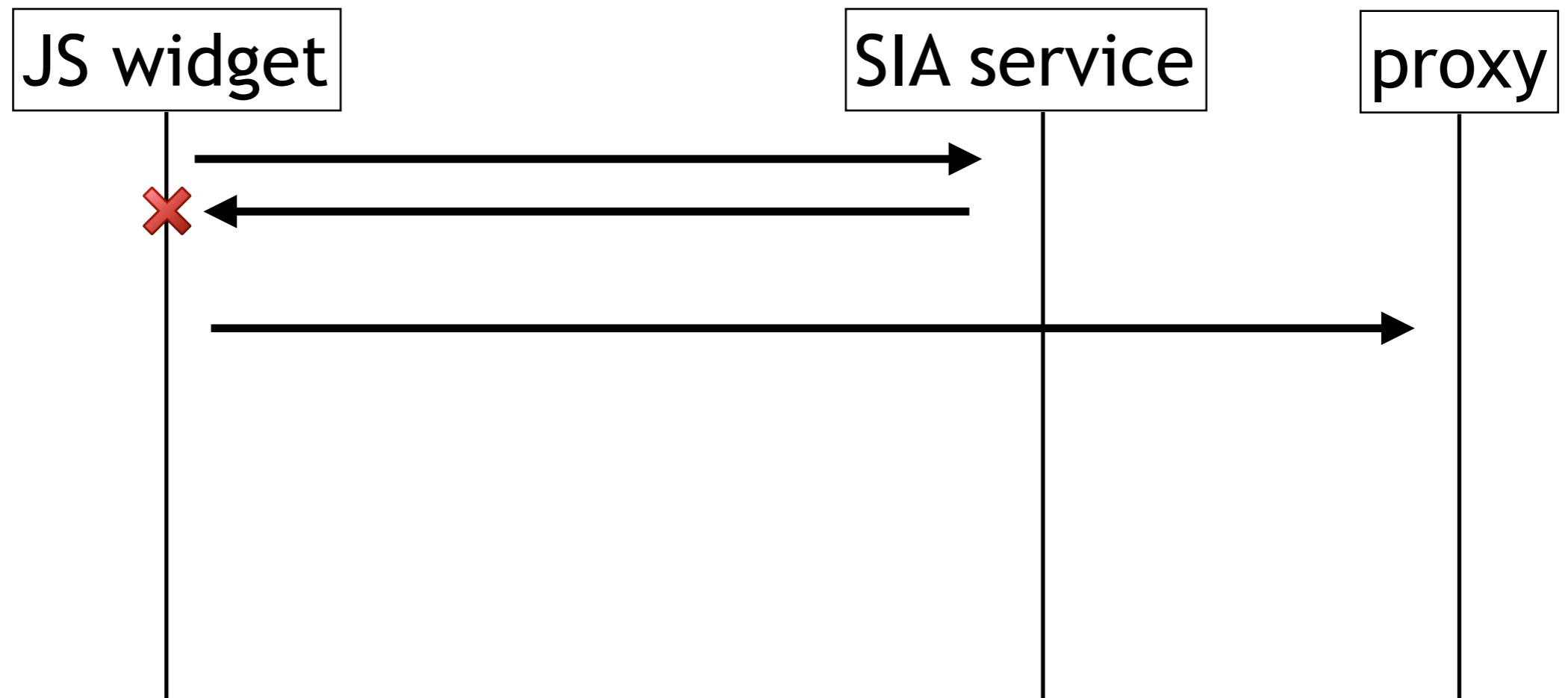
□ Overcoming same-domain limitation

- Retrieve data through a **proxy**



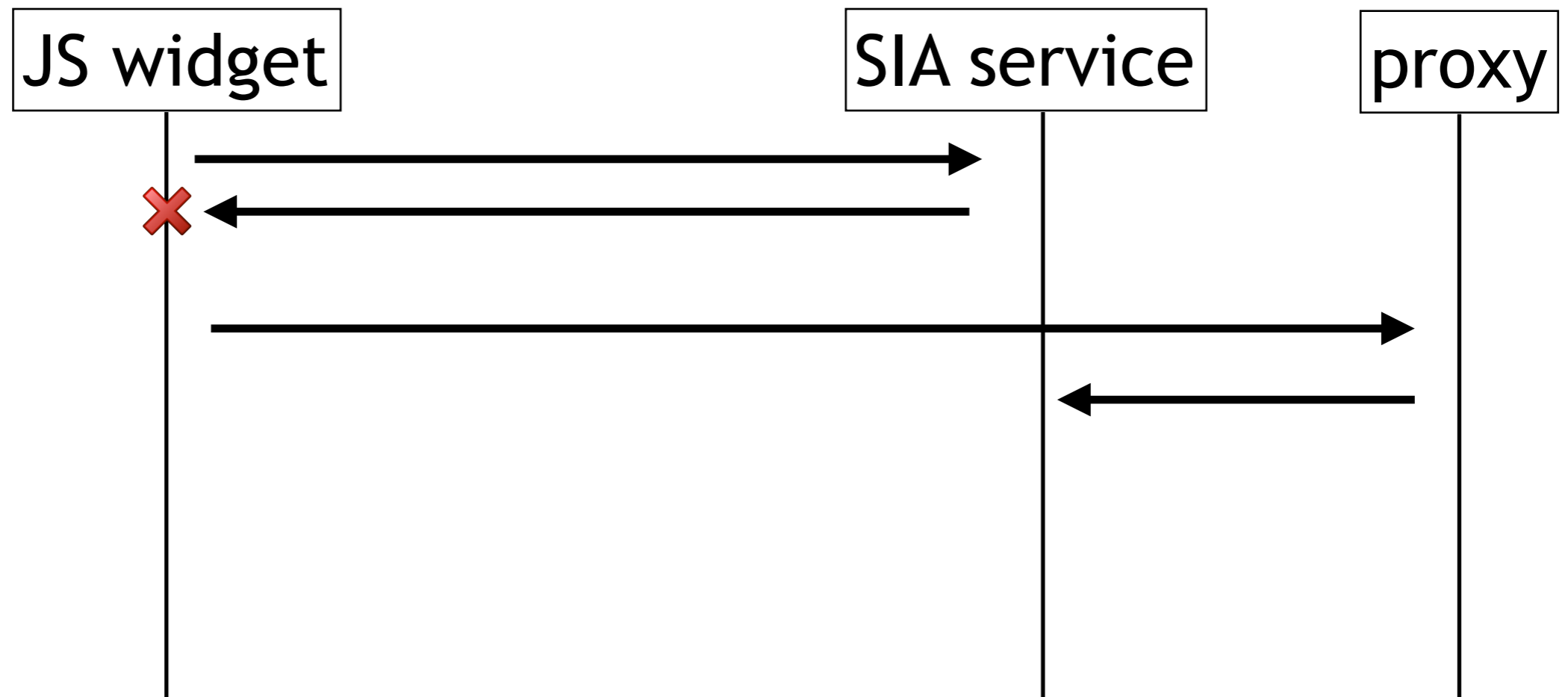
□ Overcoming same-domain limitation

- Retrieve data through a **proxy**



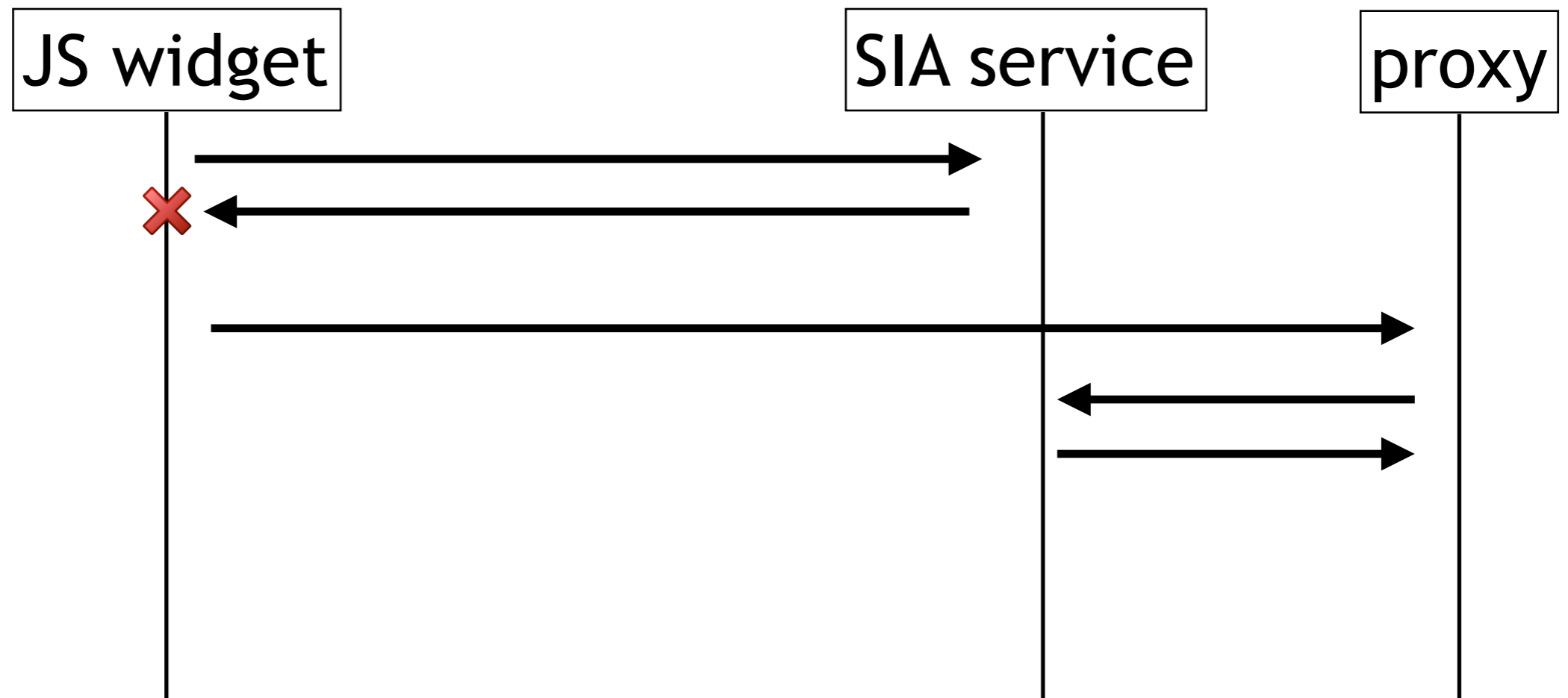
□ Overcoming same-domain limitation

- Retrieve data through a **proxy**



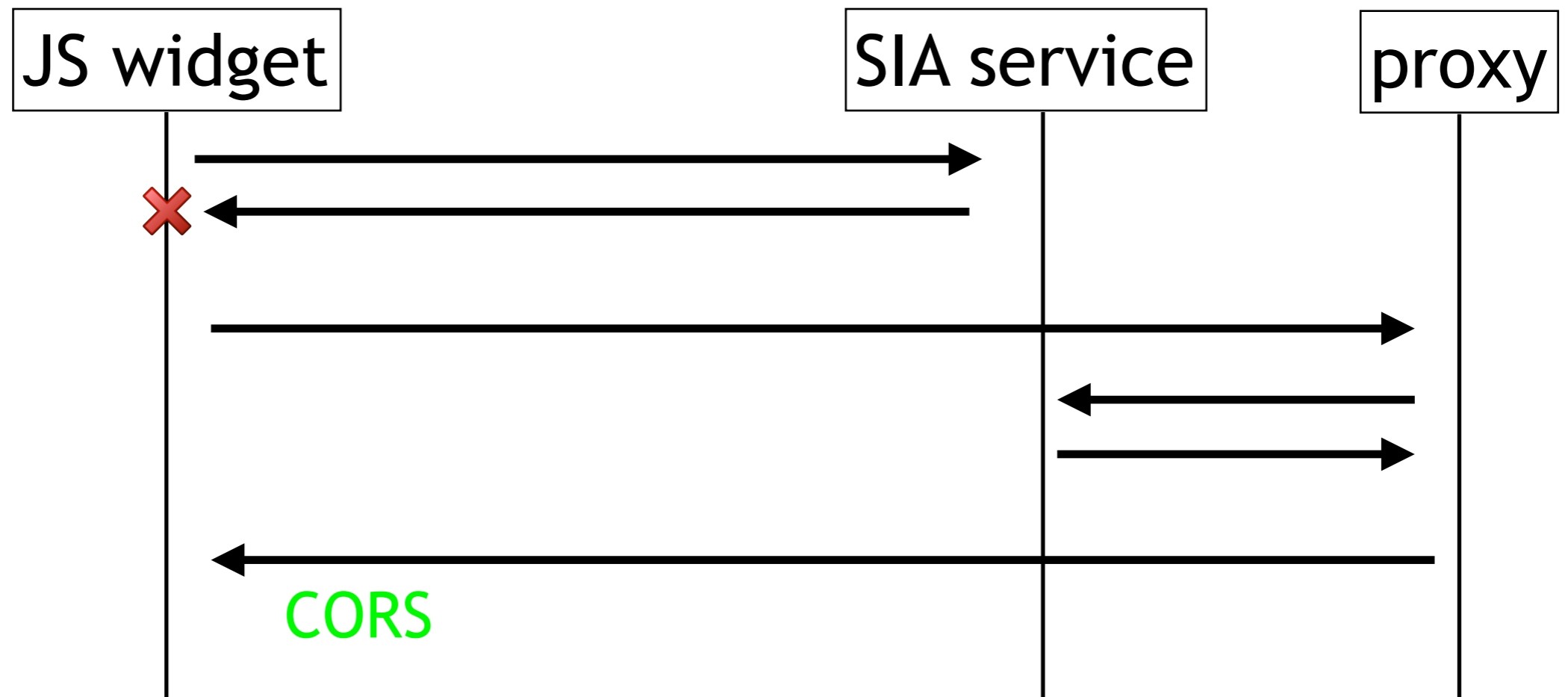
□ Overcoming same-domain limitation

- Retrieve data through a **proxy**



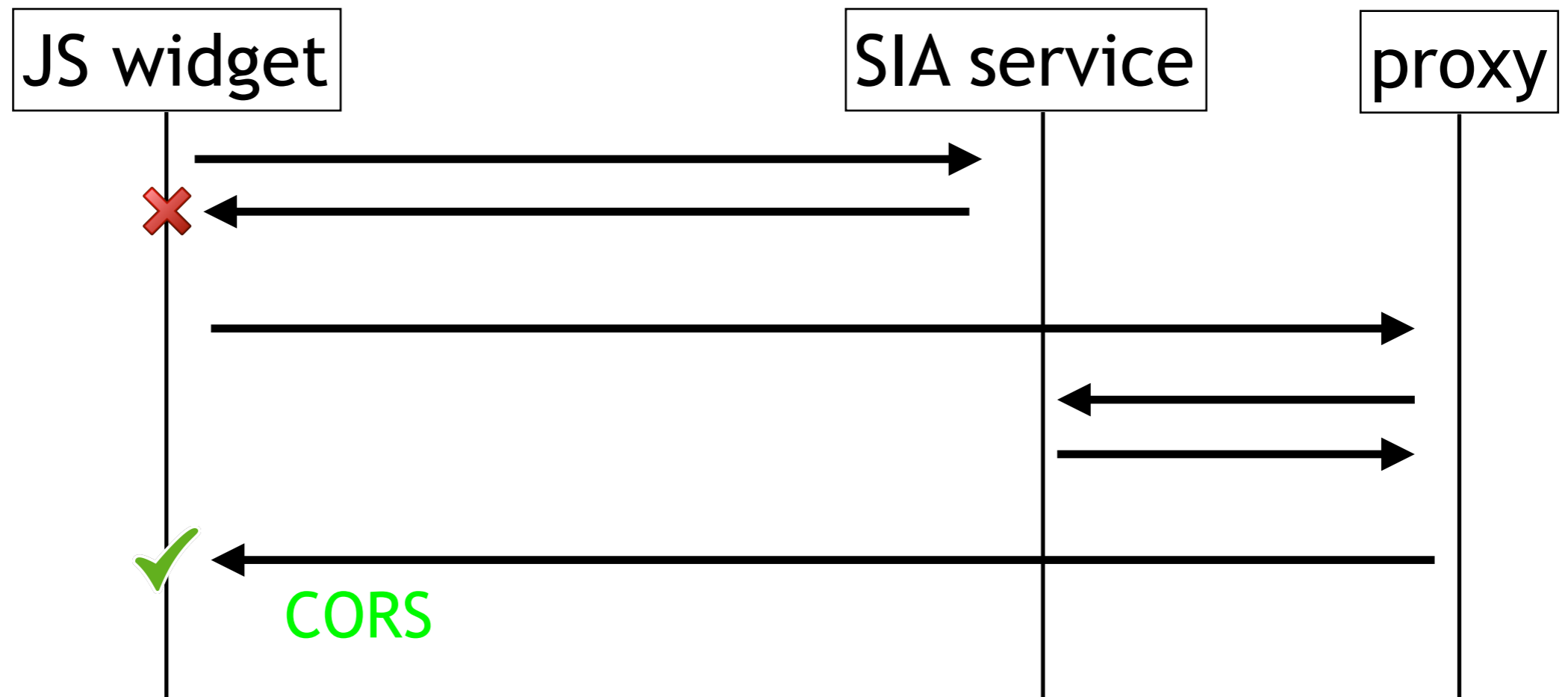
□ Overcoming same-domain limitation

- Retrieve data through a **proxy**



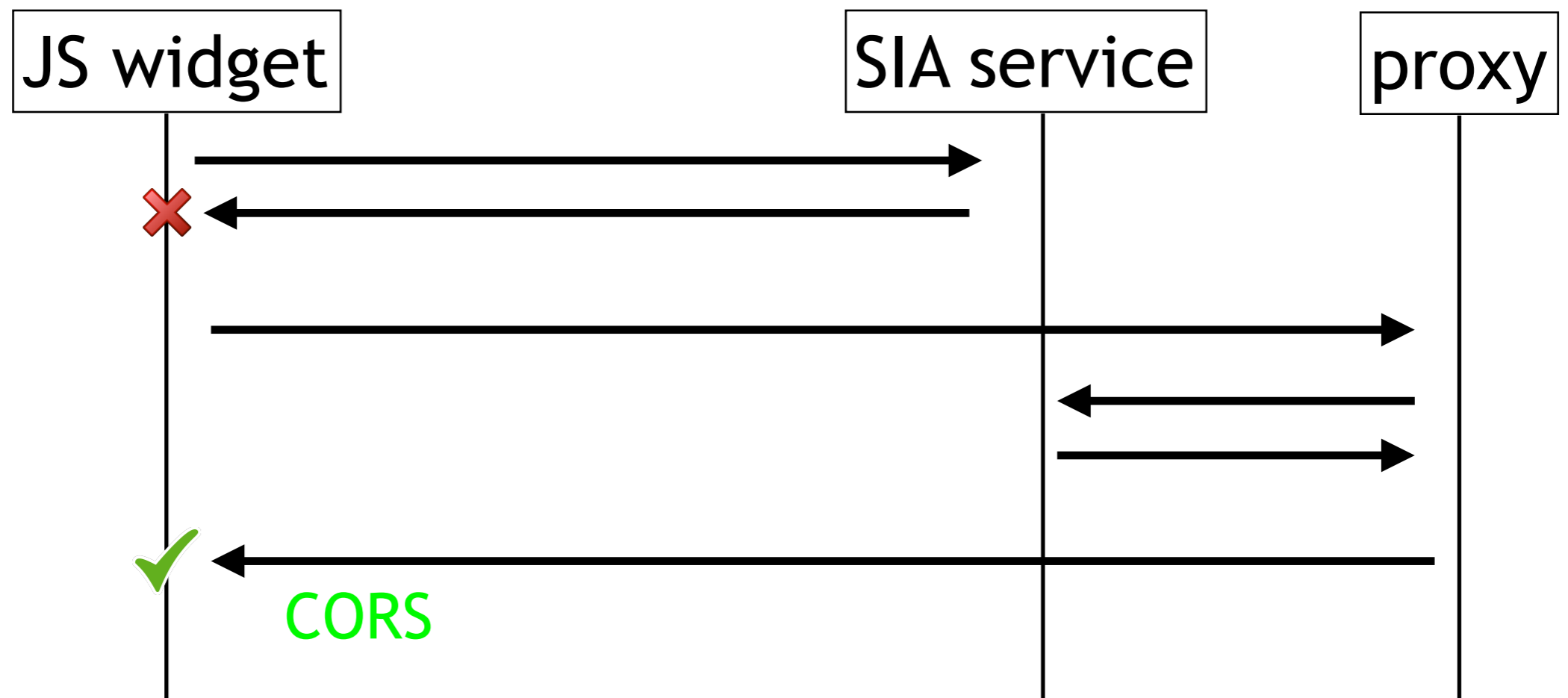
□ Overcoming same-domain limitation

- Retrieve data through a **proxy**



□ Overcoming same-domain limitation

- Retrieve data through a **proxy**



- This solution works but 2 drawbacks:
 - introduces an additional dependency (the proxy)
 - is slower than direct query

□ Enabling CORS

- <http://enable-cors.org/>
- On Apache server:
 - install *mod_headers*
 - for resources to be served with CORS support:

```
Header set Access-Control-Allow-Origin "*" 
```

□ Security concerns?

- Enabling *CORS* might increase the surface attack for **URLs needing credentials**
- For **public content**, intended to be accessible to everyone, adding **CORS headers** is **harmless**

□ Current status: CORS support for DAL services

- SIAP services
20% have CORS support (42/207)
- SSAP services
30% have CORS support
- Cone Search services
89% have CORS support
—> 2% if VizieR CS removed
- TAP services
15% have CORS support

☐ Encourage CORS adoption in VO services

- addition to DALI?
- other ideas or comments?