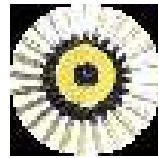


Aladin/Topcat interoperability using **PLASTIC**



Thomas Boch [CDS]



Aladin/TOPCAT PLASTIC demo - T. Boch –
IVOA Interop@Victoria – May 2006



Demo introduction

- Goal : demonstrate how PLASTIC can help desktop tools (e.g TOPCAT/Aladin) intercommunicate
 - Exchange of VOTables
 - Exchange of FITS images
 - « Linked views » across applications
- Reminder
 - TOPCAT knows nothing about Aladin's internal
 - Aladin knows nothing about TOPCAT's internal
 - Both send PLASTIC messages



Screenshot 1 : exchange of VOTables

Aladin v3.6 multiview *** PROTOTYPE VERSION (based on v3.624) ***

Position: J2000 Pixel: 8 bits

PI-POSSII.J.DSS2.420-PLATE

2MASS_small_errors

Context menu options:

- Select all objects of the selected planes
- Create a new plane with the selected sources
- Broadcast planes to all PLASTIC applications
- Broadcast selected tables to ...
- Broadcast selected images to ...
- Delete
- Delete all planes...
- Cross match selected catalogs
- Add a new column
- Create a new filter
- Convert RGB image into grey image
- Create a new folder
- Insert in a new folder
- Collapse the selected folders

topcat

(c)1999-2006 ULP/CNRS - Centre de Données astronomiques

TOPCAT

File Views Graphics Joins Windows Interop Help

Table List: 1: 2MASS_small_errors.xml

Current Table Properties:

- Label: 2MASS_small_errors.xml
- Location: 2MASS_small_errors.xml
- Name:
- Rows: 17361
- Columns: 19
- Sort Order: ↑
- Row Subset: All
- Activation Action: (no action)

TOPCAT(1): Table Browser

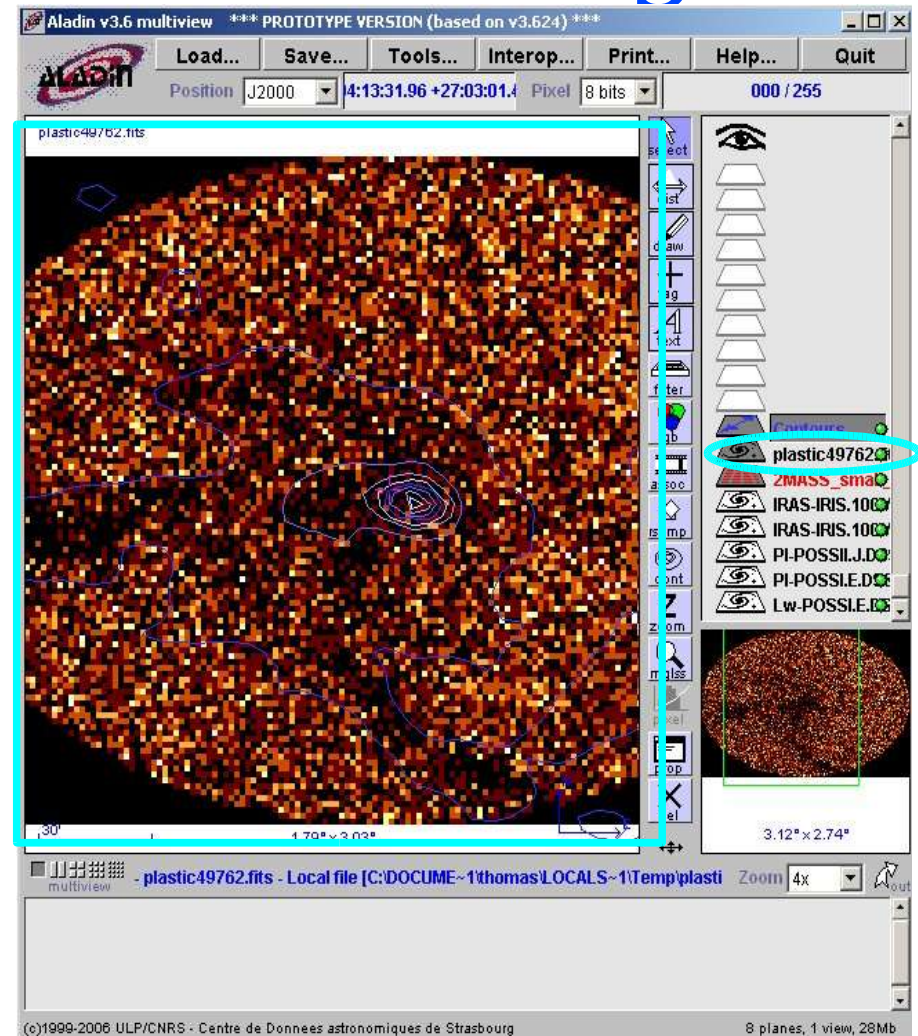
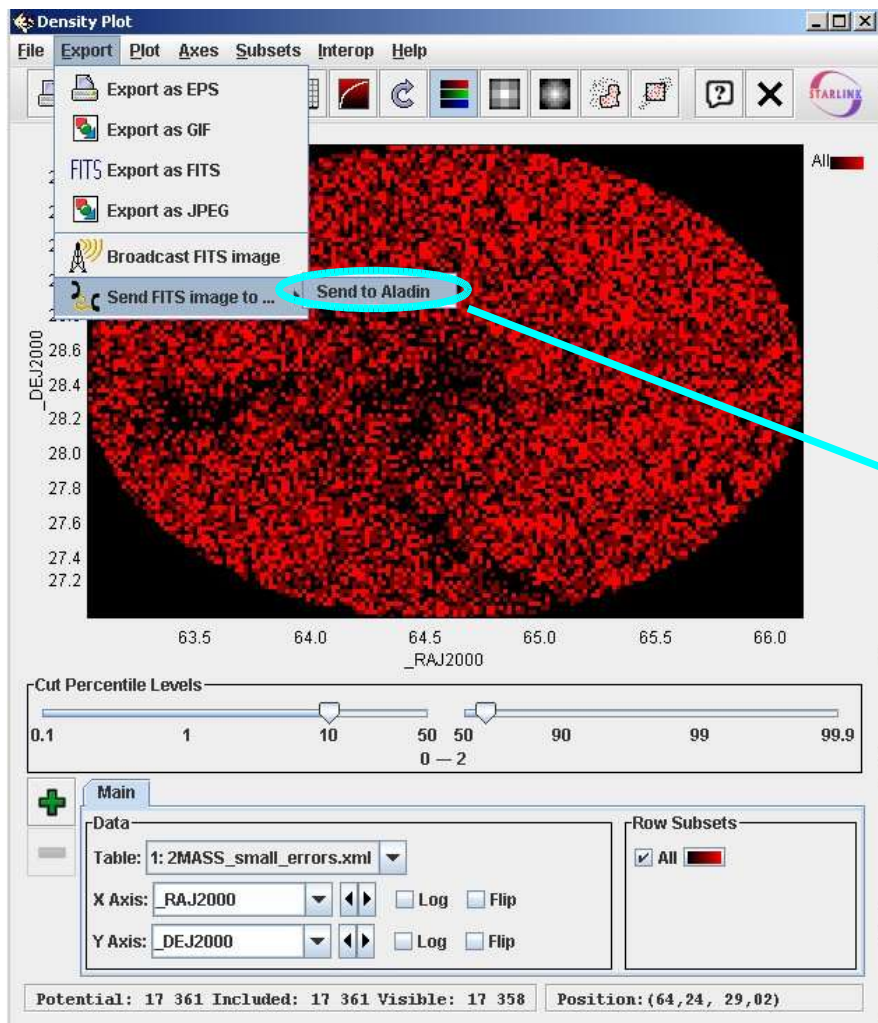
File Subsets Help

Table Browser for 1: 2MASS_small_errors.xml

	0	RAJ2000	DEJ2000	J-H	H-K	J-K	Jmag
24	51	64,5243	27,0435	0,537	0,231001	0,768001	15,031
25	14	64,5378	27,0464	0,419001	0,26	0,679001	15,362
26	52	64,5995	27,0486	0,578	0,112	0,69	13,985
27	34	64,6074	27,0408	0,485	-0,054	0,431	14,304
28	31	64,5635	27,0618	0,651999	0,123	0,775	13,933
29	59	64,5704	27,0476	0,587	0,172	0,759	12,471
30	34	64,5681	27,0292	0,261	0,125	0,386	11,037
31	07	64,5812	27,0591	0,482	0,014	0,496	15,241
32	18	64,5667	27,0412	0,544	0,209	0,752999	13,815
33		64,6443	27,022	0,795	0,171	0,966001	14,39
34	9	64,6606	27,0442	0,73	0,267	0,997001	14,864
35	33	64,6628	27,0248	0,464	0,166	0,63	13,839
36	53	64,6684	27,0445	0,286	0,154	0,440001	11,361
37	16	64,6818	27,0532	0,463	-0,035	0,428	15,236



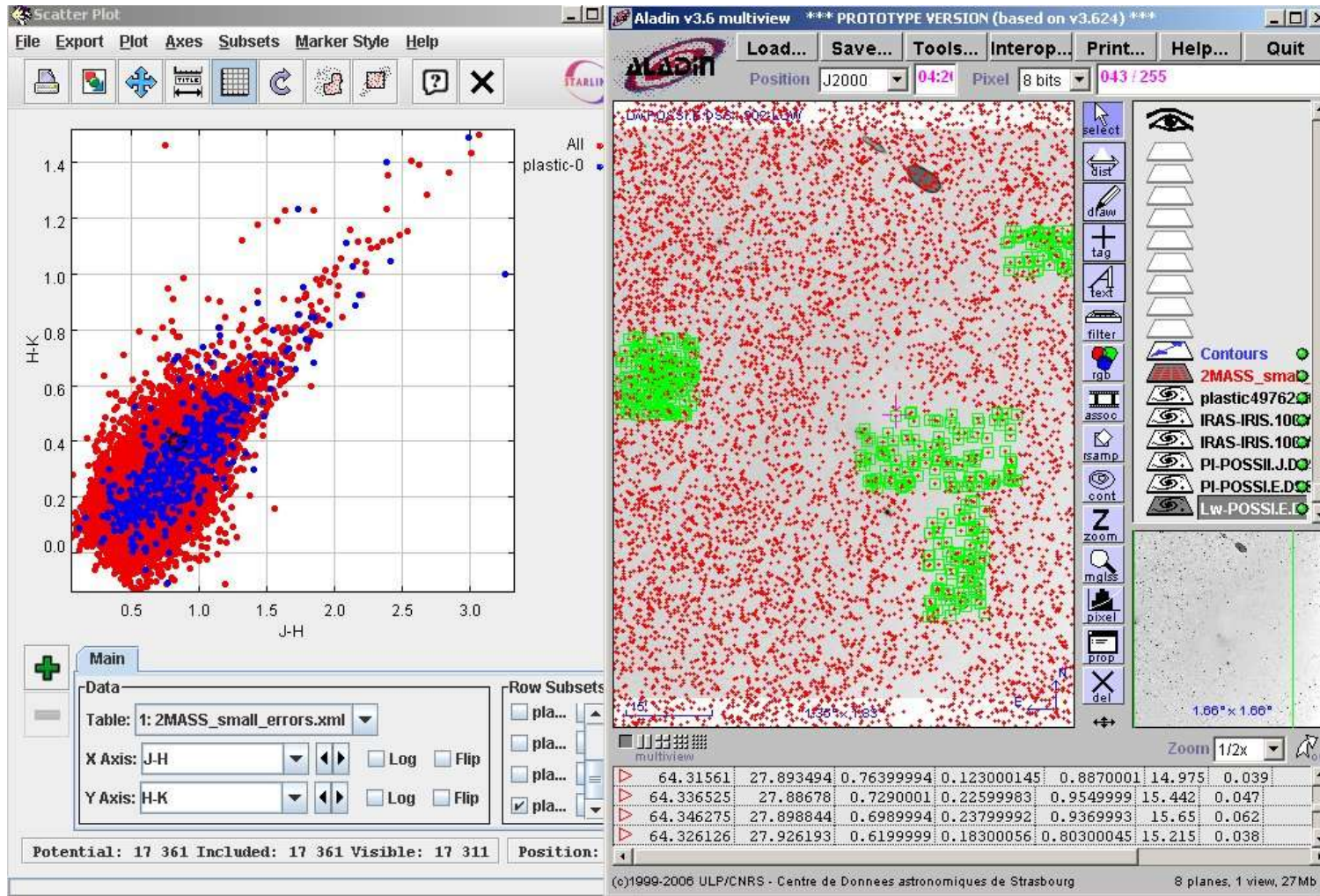
Screenshot 2 : broadcast of a FITS image



Aladin/TOPCAT PLASTIC demo - T. Boch –
IVOA Interop@Victoria – May 2006



Screenshot 3 : linked views



Select subset of sources in Aladin, and see where they lie in the parameter space



Aladin/TOPCAT PLASTIC demo - T. Boch –
IVOA Interop@Victoria – May 2006



Links

- PLASTIC specification :
<http://plastic.sourceforge.net/spec.html>
- PLASTIC messages definition :
<http://plastic.sourceforge.net/coremessages.html>
- TOPCAT :
<http://www.star.bris.ac.uk/~mbt/topcat/>
- Aladin download page :
<http://aladin.u-strasbg.fr/java/nph-aladin.pl?frame=downloading>
(choose the 'prototype version' which includes PLASTIC-awareness)

