

# Aladin VO new features

The logo for ALADIN features the word "ALADIN" in a bold, black, sans-serif font. The text is superimposed on a stylized, multi-colored (red, blue, and purple) spiral or galaxy-like graphic. The spiral is composed of concentric, slightly irregular rings, and the entire graphic is surrounded by a field of small, scattered dots in red, blue, and purple, giving it a starry or nebular appearance.

**ALADIN**

**P.Fernique, T.Boch,**

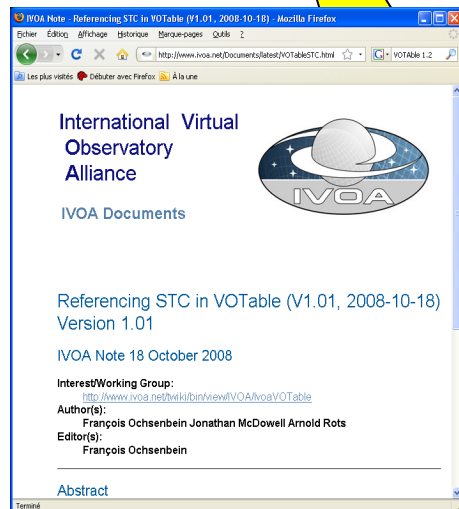
**F.Bonnarel, A.Oberto**

presented by Pierre Fernique

*Interop 2009 - Strasbourg*

# New VO features

- SAMP support
- AVM support
- VOTable 1.2



International Virtual Observatory Alliance

IVOA Documents

Referencing STC in VOTable (V1.01, 2008-10-18)  
Version 1.01

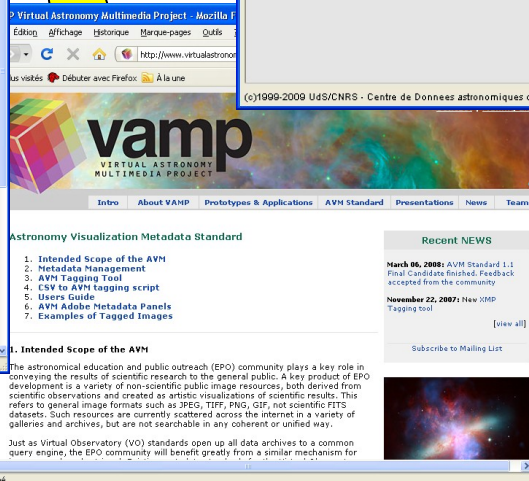
IVOA Note 18 October 2008

InterestWorking Group:  
<http://www.ivoa.net/wiki/bin/view/IVOA/voaVOTable>

Author(s):  
François Ochsenbein Jonathan McDowell Arnold Rots

Editor(s):  
François Ochsenbein

Abstract



Virtual Astronomy Multimedia Project

Virtual Astronomy Multimedia Project

Intro About VAMP Prototypes & Applications AVM Standard Presentations News Team

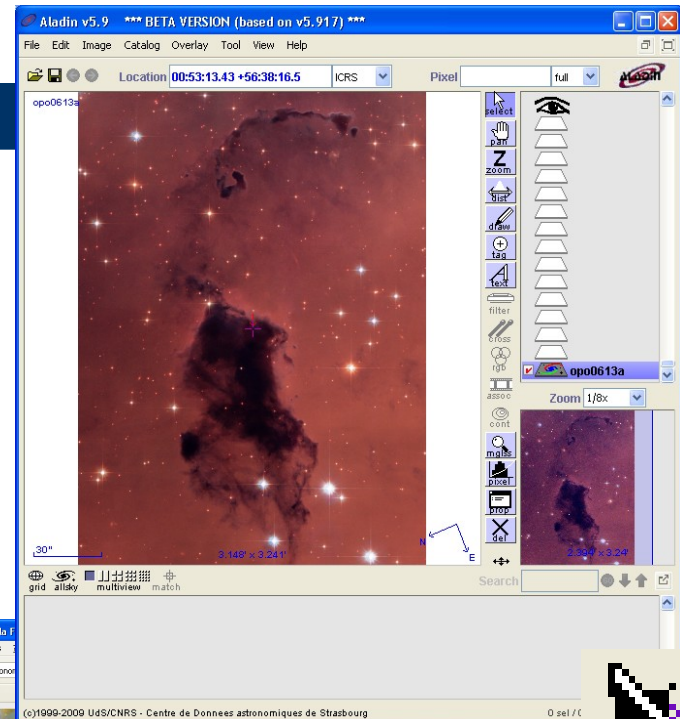
### Astronomy Visualization Metadata Standard

1. Intended Scope of the AVM
2. Metadata Management
3. AVM Tagging Tool
4. CSV to AVM tagging script
5. Users Guide
6. AVM Adobe Metadata Panels
7. Examples of Tagged Images

### 1. Intended Scope of the AVM

The astronomical education and public outreach (EPO) community plays a key role in conveying the results of scientific research to the general public. A key product of EPO development is a variety of non-scientific public image resources, both derived from scientific observations and created as artistic visualizations of scientific results. This refers to general image formats such as JPEG, TIFF, PNG, GIF, not scientific FITS datasets. Such resources are currently scattered across the internet in a variety of galleries and archives, but are not searchable in any coherent or unified way.

Just as virtual observatory (VO) standards open up all data archives to a common query engine, the EPO community will benefit greatly from a similar mechanism for



Aladin v5.9 \*\*\* BETA VERSION (based on v5.917) \*\*\*

File Edit Image Catalog Overlay Tool View Help

Location: 00:53:13.43 +56:38:16.5 ICRS Pixel: full

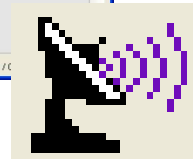
opo0613a

30" 3.148" x 3.241"

Zoom 1/8x

2.349" x 3.239"

©1999-2009 Uds/CNRS - Centre de Données astronomiques de Strasbourg 0 sel / C

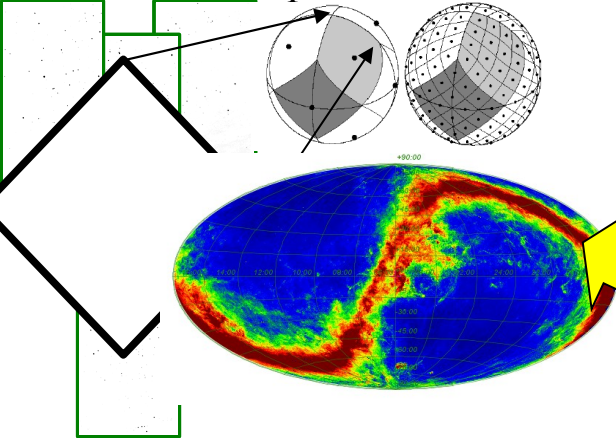


# Other new features

- Outreach mode
- Full sky browser
- Measurement histogram browser
- Photometry tools
  
- RICE support
- « Get » command extension  
(=> for constraining SIA results)

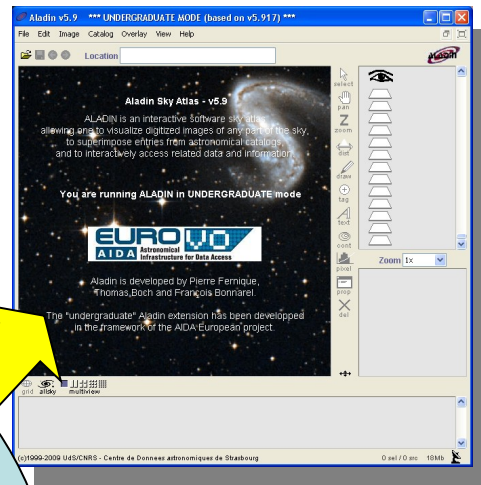
# Full sky browser

Based on a Healpix hierarchical scheme



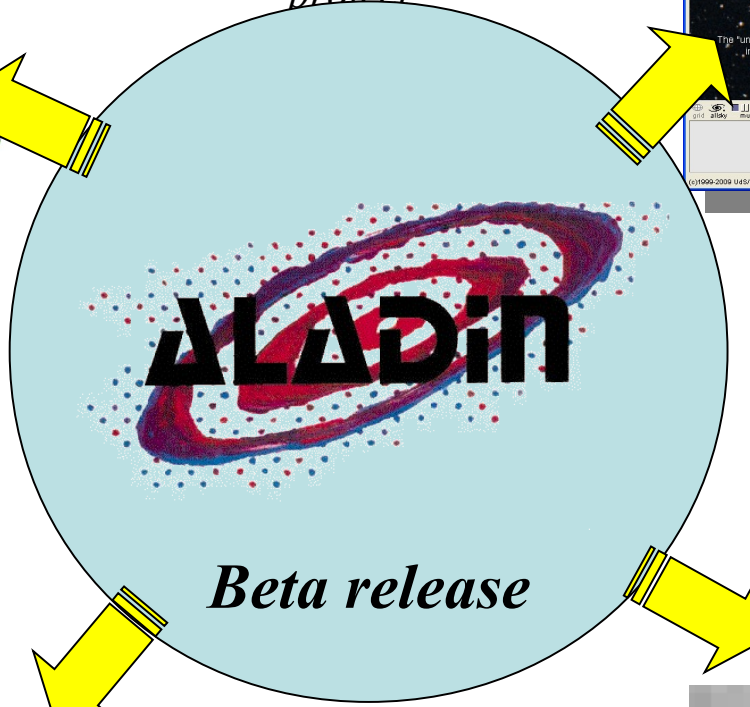
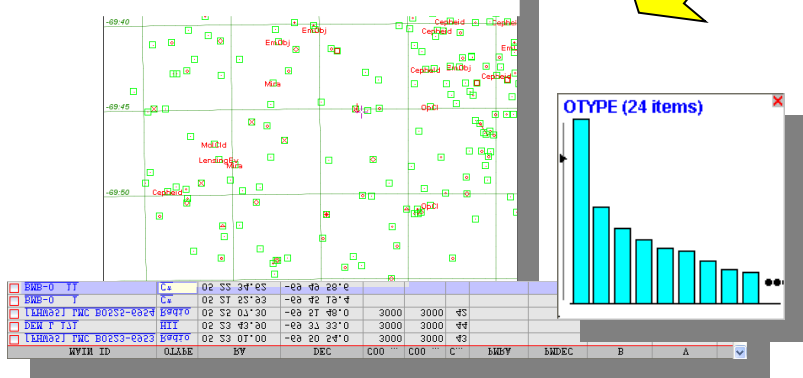
# Outreach mode

In the framework of the European AIDA project



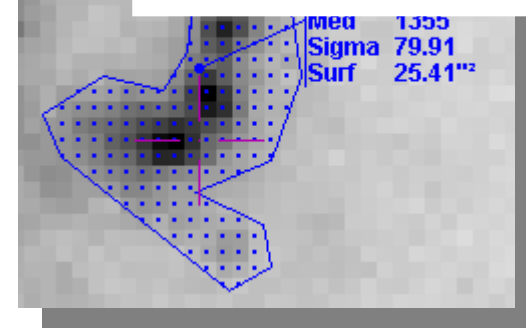
# Measurement histogram browser

Based on a Galexview idea



# Photometry tools

Circle or polygonal area measurements



# Short live demo

*based on AladinBeta  
available on official CDS web pages*

The logo for ALADiN features the word "ALADiN" in a bold, black, sans-serif font. The letters are partially overlaid by a thick, dark blue horizontal bar. Behind the text is a stylized, colorful graphic consisting of concentric, swirling bands in shades of red, purple, and blue, surrounded by a field of small, scattered dots in the same color palette.

**ALADiN**