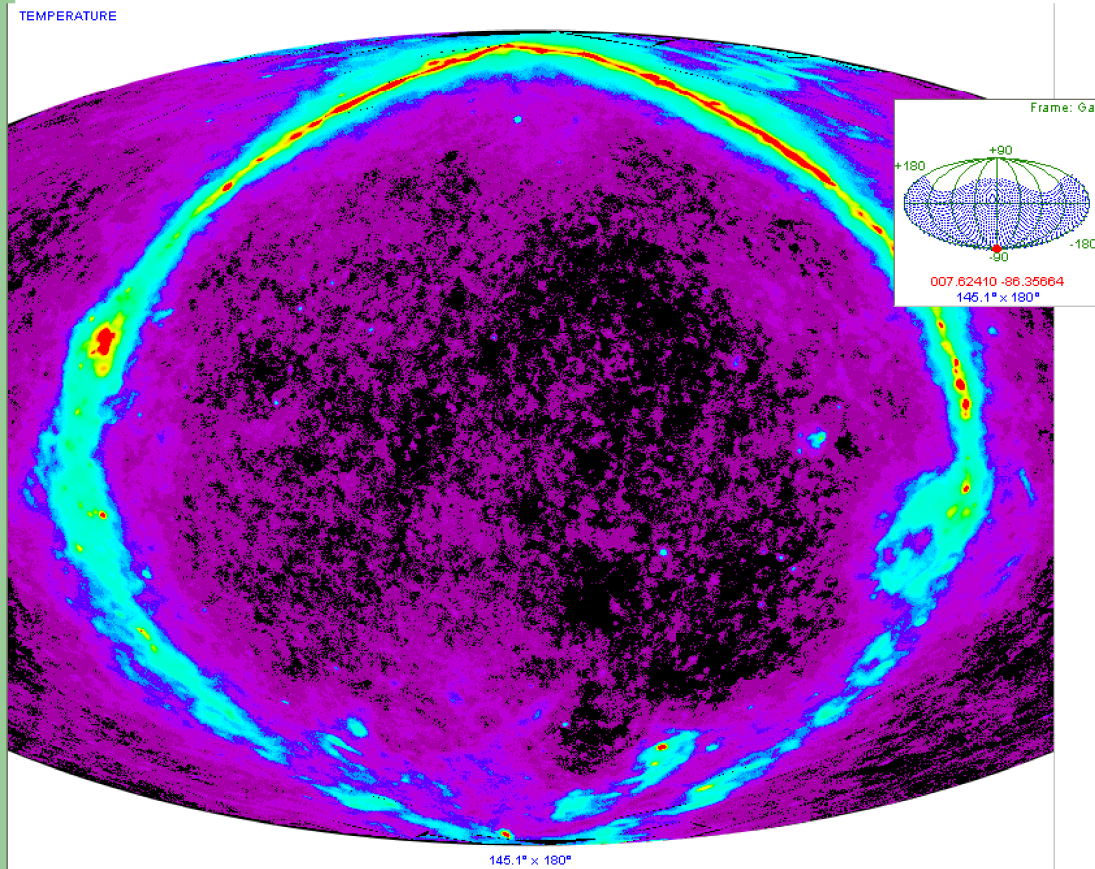
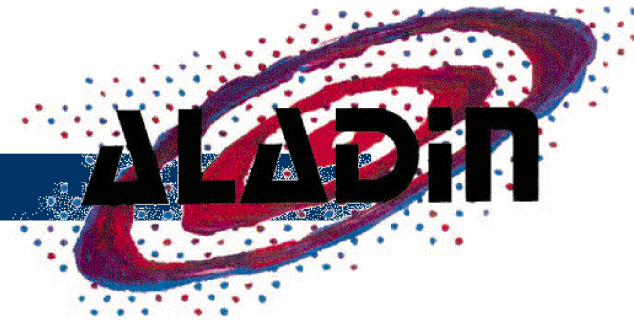


# Aladin V7 definitely « all sky »



*P. Fernique,  
T.Boch,  
F. Bonnarel,  
A.Oberto*

Interop Victoria  
May 2010

# Why hierarchical whole sky ?

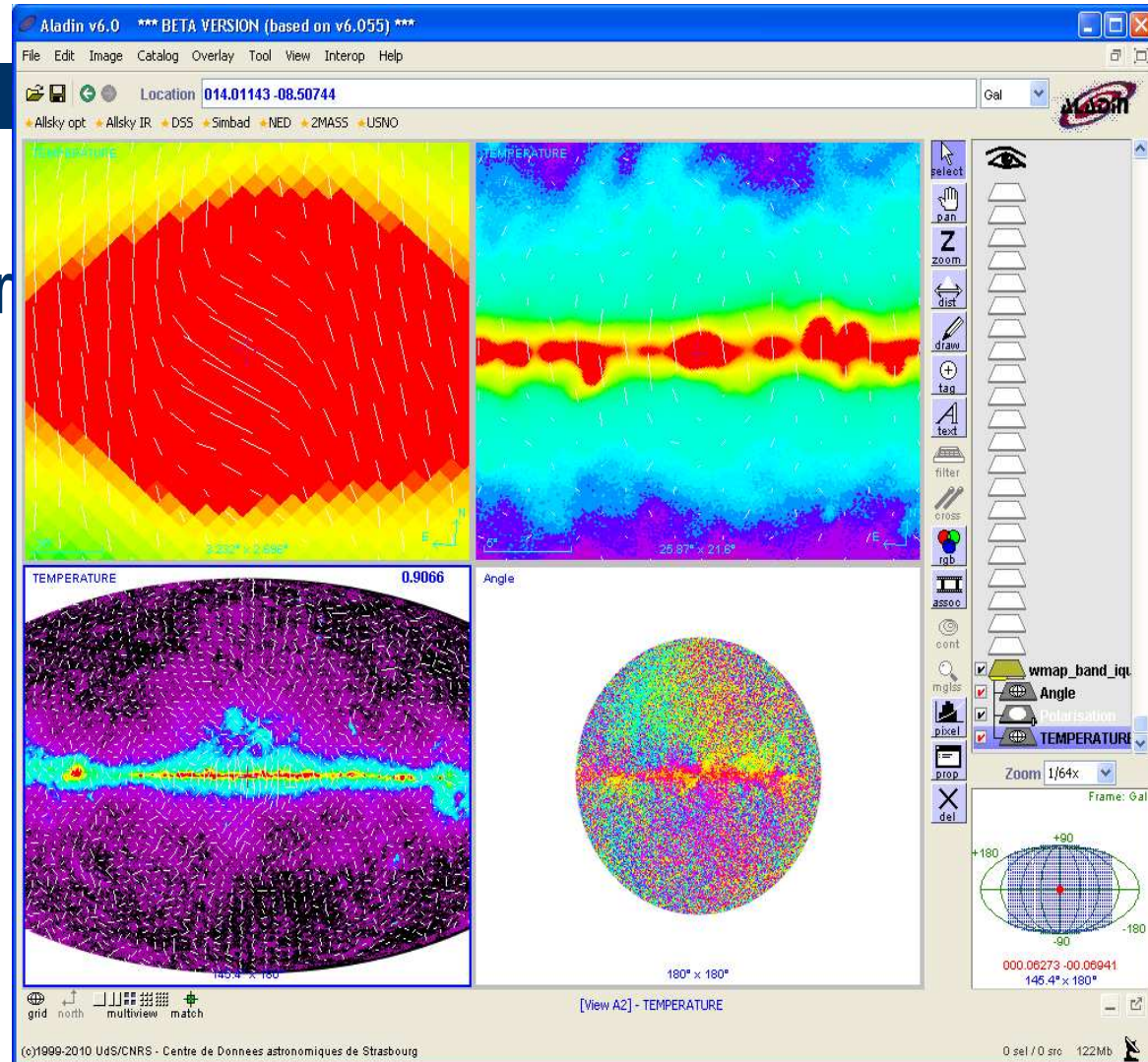
- Virgo, WWT, Gsky tools => so fun
- COBE, IRAS, WMAP, PLANCK
- Global view *means* global comparison

# Aladin technical solutions

- HEALPix tessaliation
- Support for remote Healpix surveys
- Or local Healpix FITS file maps.

# Aladin adaptation for PLANCK (\*)

- Healpix FITS reader/writer
- Polarisation support



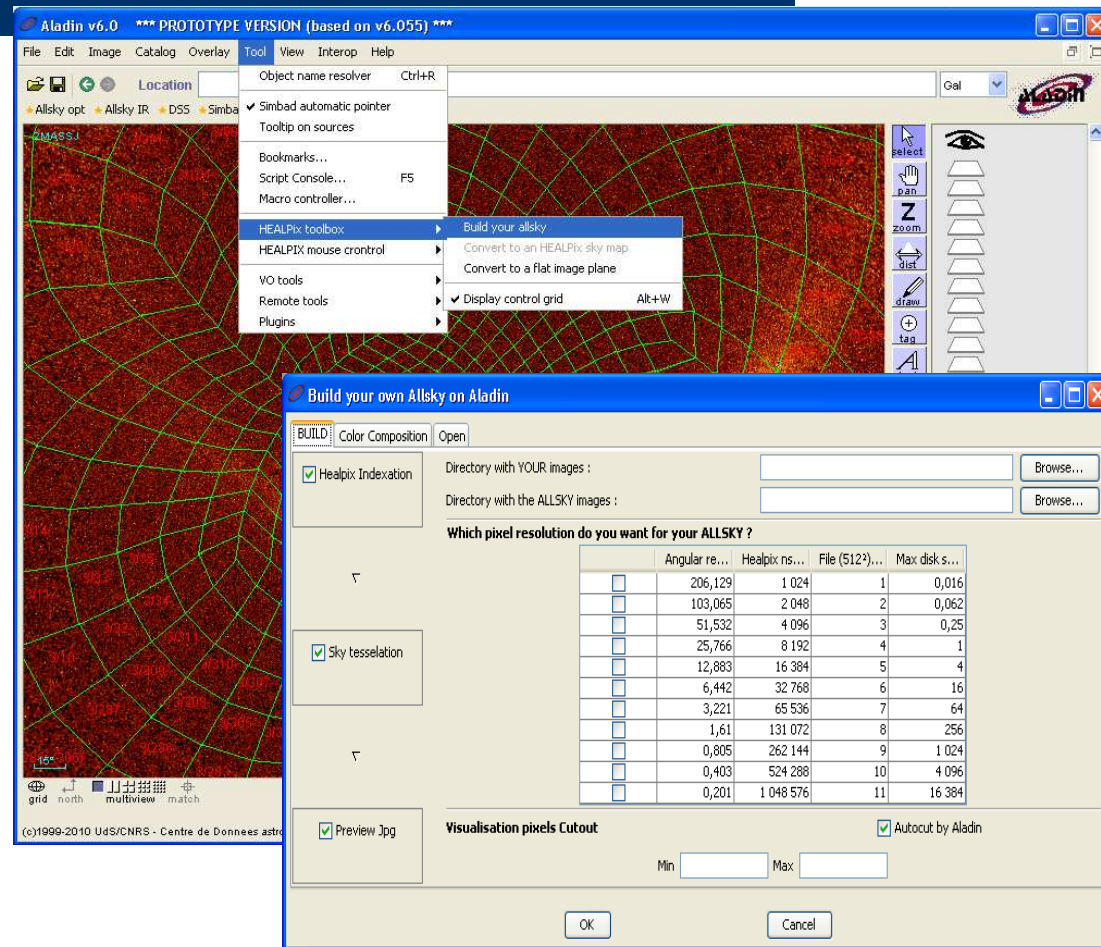
(\*) Here WMAP

# Surveys & synthetic maps

The screenshot displays the Aladin v6.0 software interface, which is a BETA VERSION based on v6.055. The main window is divided into two panels: 'IRISColor' on the left and 'VizieR map' on the right. Both panels show a 180° x 180° view of the sky. The 'IRISColor' panel displays a colorful, multi-wavelength image of the galaxy, with the word 'Iris' overlaid in yellow. The 'VizieR map' panel displays a synthetic map of the same region, with the text 'VizieR coverage maps' overlaid in yellow. The interface includes a menu bar (File, Edit, Image, Catalog, Overlay, Tool, View, Interop, Help), a toolbar with various icons for navigation and analysis, and a status bar at the bottom. The status bar indicates the current view is '[View B1] - VizieR map' and shows the coordinates '003.46911 +13.74951' and '180° x 180°'. The copyright notice '(c)1999-2010 Uds/CNRS - Centre de Donnees astronomiques de Strasbourg' is visible at the bottom left.

# Build your all sky...

- Healpix whole sky generator inside Aladin v7
- From personal Fits image collection



# Demo !

*based on AladinBeta*

<http://aladin.u-strasbg.fr/java/AladinBeta.jnlp>



# Registry proposal for all sky resource

```
<capability xsi:type="SimpleAllSkyAccess">
  <interface type="HEALPIXmap">
    <accessURL use="base">http://..</accessURL>
    <HEALPix>
      <frame>Gal</frame>
      <tileFormat>FITS</tileFormat>
      <treeDepth>12</treeDepth>
    </HEALPix>
  </interface>
  ...
</capability>
```





Questions ? Remarks ?

<http://aladin.u-strasbg.fr/java/AladinBeta.jnlp>