

The POMME Demonstrator

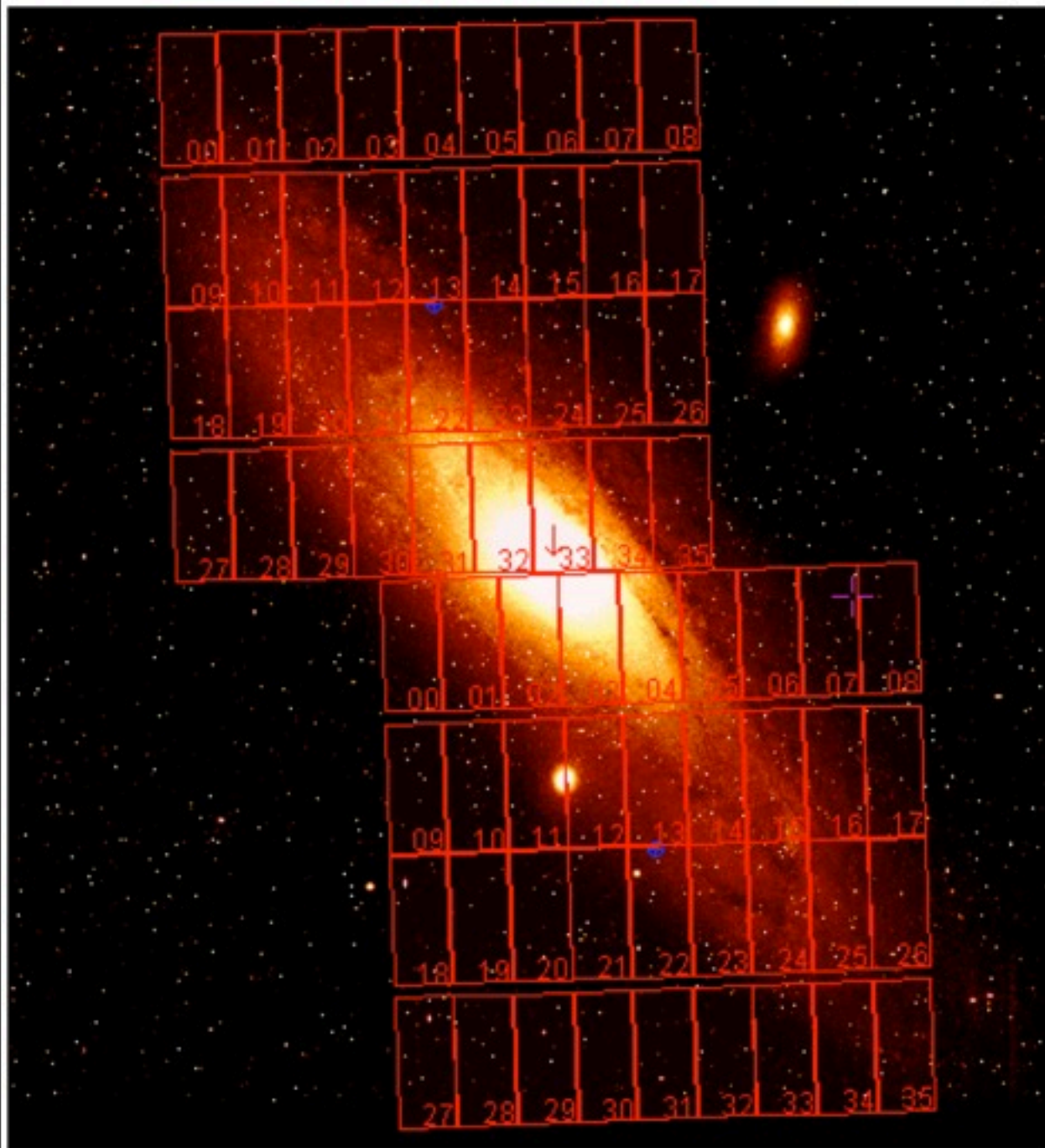
A VO-compatible light-curve explorer

Renaud Savalle, David Valls-Gabaud

VO-Paris Data Centre, Observatoire de Paris

Heidelberg IVOA Interop Meeting - 13 May 2013

POMME - Pixel Observations of M3 I with MEgacam



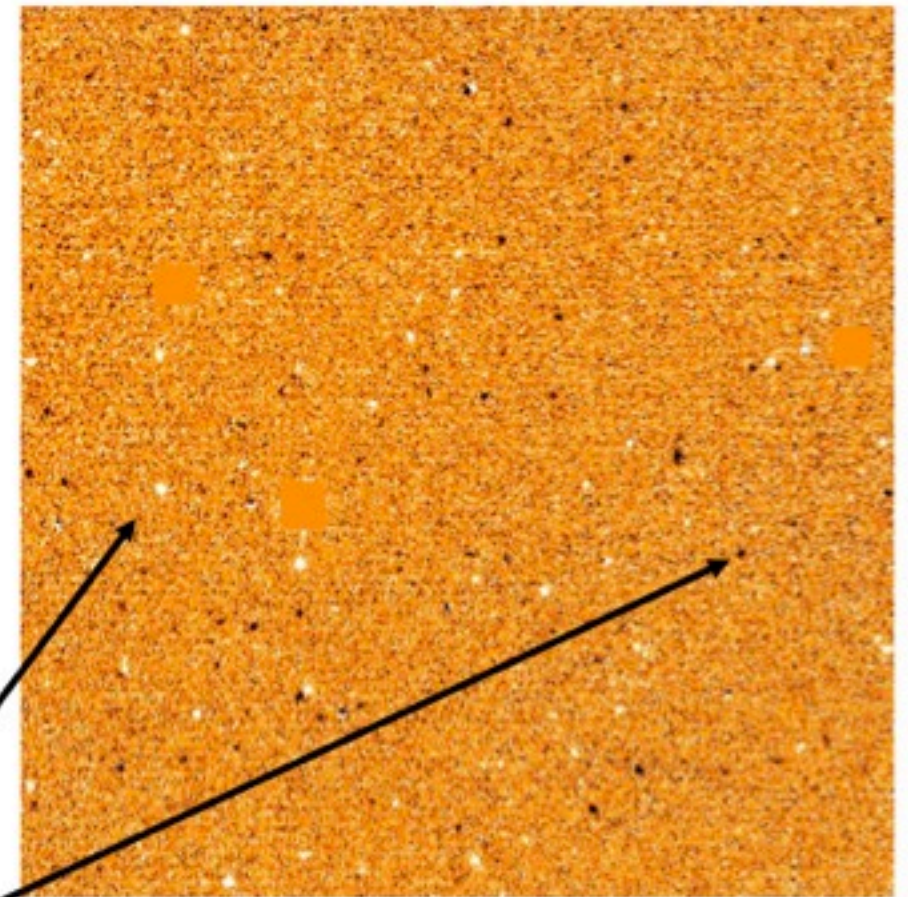
- 2 epochs:
 - 2004/08-10
 - 2005/08-10
- 2 fields Megacam@CFHT
- 3 filters: g',r',i'
- Median seeing: 0.7 arcsecs
- Science goals: time-domain !
 - Identify variables
 - Study cepheids and EBs
 - Improve distance determination

Difference Imaging

single frame



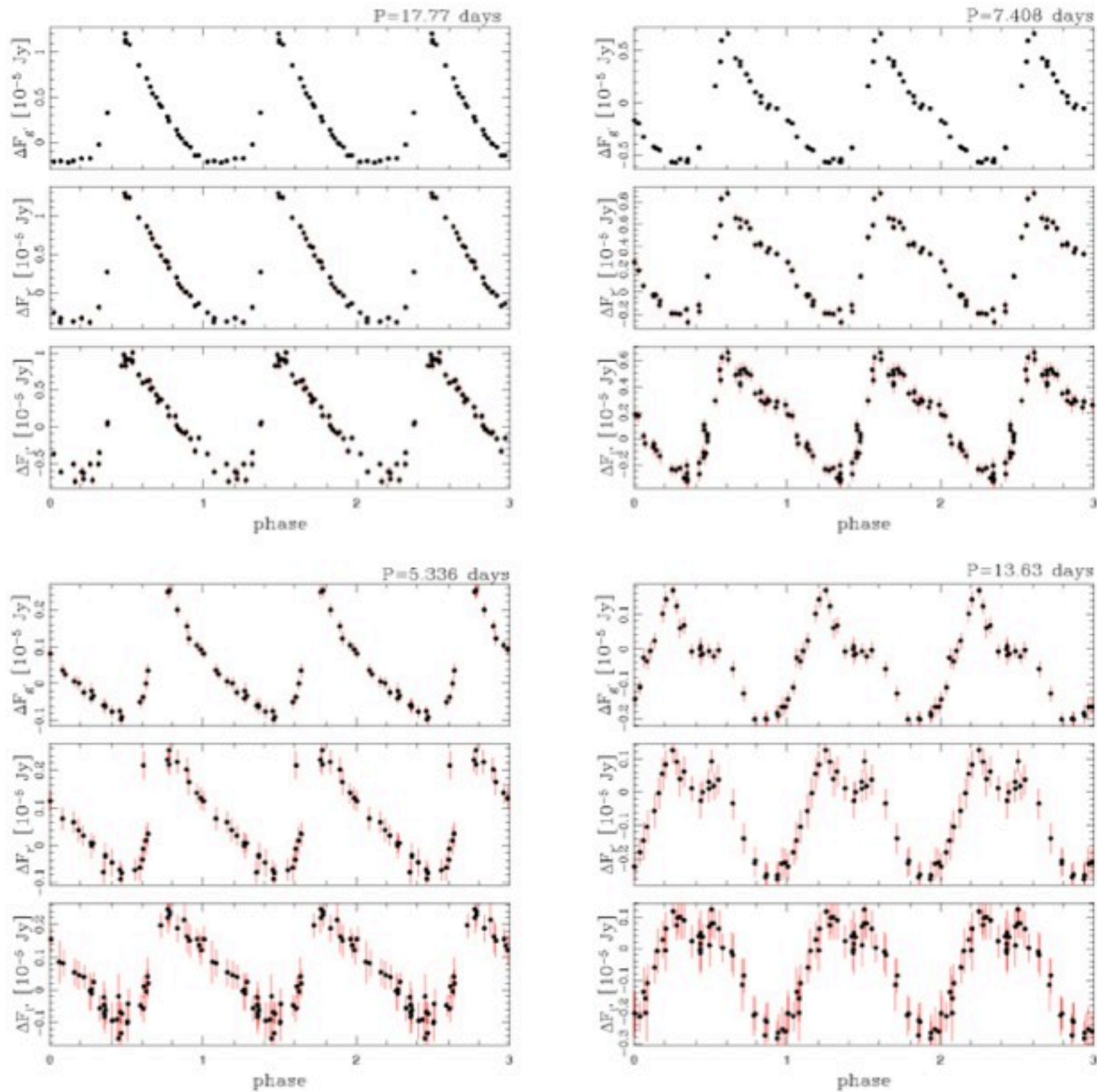
difference frame



- **reference frame**

variable point sources

POMME Light curves



POMME Database

- Main catalog: Positions and light-curves

| variables | |
|-----------|-----------------------|
| id | CHARACTER VARYING(12) |
| ra | CHARACTER VARYING(12) |
| de | CHARACTER VARYING(12) |
| period | DOUBLE PRECISION |
| num | INTEGER |

63,174 rows

| lightcurves | |
|---------------|-----------------------|
| variable_id | CHARACTER VARYING(12) |
| band | CHARACTER(1) |
| mjd | DOUBLE PRECISION |
| dflux_a | DOUBLE PRECISION |
| dflux_psf | DOUBLE PRECISION |
| err_dflux_a | DOUBLE PRECISION |
| err_dflux_psf | DOUBLE PRECISION |

8,287,978 rows

- Cross-matches: (examples: SIMBAD, VizieR)

| x_2_simbad_variables_all | |
|--------------------------|-----------------------|
| id_1 | CHARACTER VARYING(11) |
| ra_1 | CHARACTER VARYING(12) |
| de_1 | CHARACTER VARYING(12) |
| period | REAL |
| ra_2 | DOUBLE PRECISION |
| de_2 | DOUBLE PRECISION |
| id_2 | CHARACTER VARYING(32) |
| V__vartyp | CHARACTER VARYING(6) |
| V__LoVmax | CHARACTER(1) |
| V__Vmax | REAL |
| V__B_Vmax | CHARACTER(1) |

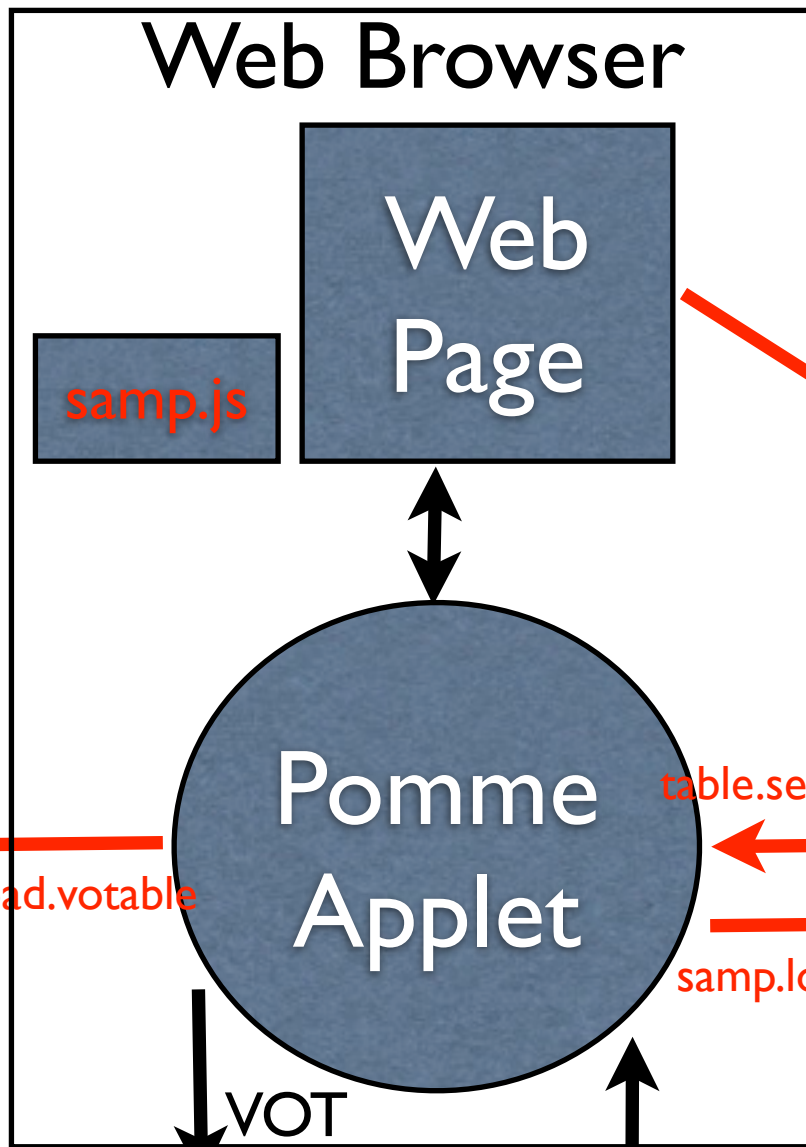
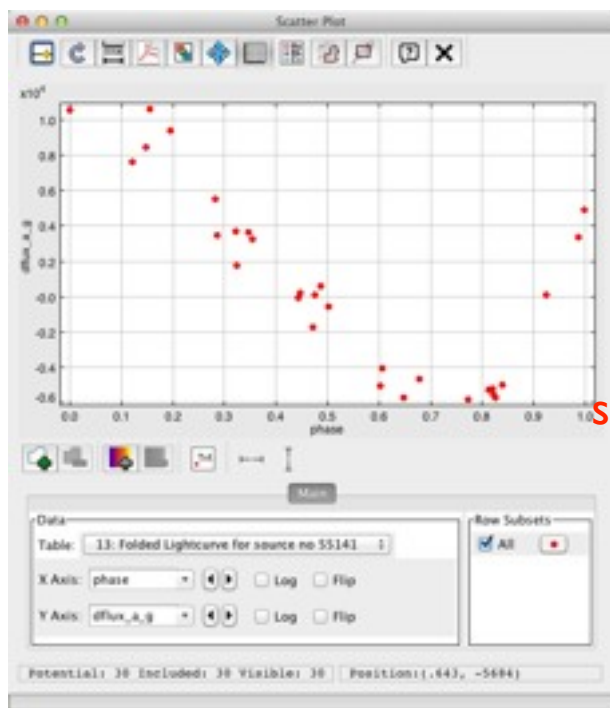
| x_2_j_a_a_459_321_table3 | |
|--------------------------|-----------------------|
| d_arcsec | DOUBLE PRECISION |
| _RAJ2000 | DOUBLE PRECISION |
| _DEJ2000 | DOUBLE PRECISION |
| Name | CHARACTER VARYING(22) |
| RAJ2000 | DOUBLE PRECISION |
| DEJ2000 | DOUBLE PRECISION |
| Vmag | REAL |
| e_Vmag | REAL |
| Bmag | REAL |
| e_Bmag | REAL |

The POMME Demonstrator

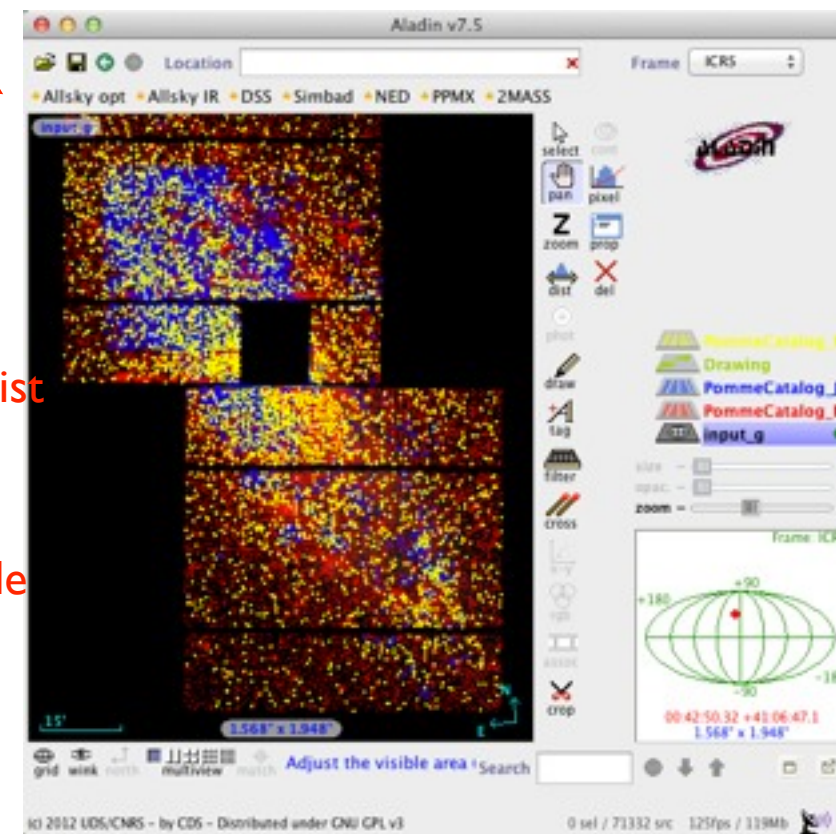
- A small web app (PHP) - to become a portal
- Uses an invisible signed applet for on-demand VOT generation+processing
- Dependencies:
 - Aladin + TOPCAT for visualization
 - SAMP for app communication
 - Web Samp Profile for web integration

Architecture

TOPCAT



Aladin



tmp VOT files

ADQL/VOT

HTTP

Pomme DB

SQL

DaCHS TAP Server

APACHE HTTP SERVER



Pomme Applet Requirements

- Invisible applet, driven by SAMP events
- Creates a catalog for Aladin from a (TAP) query
- Creates a light curve (LC) from a click on a source
- Data Processing: creates a **folded** LC
- => Speaks TAP (URLConnection)
- => Parse and generates VOTables (SAVOT)

Advantages

- On-demand, dynamic generation of light-curves
- Handled directly in the page by invisible applet
 - no need to go through another page nor generate VOTs beforehand
- Several sources can be selected and analysed
- The events received can be used to trigger more (Java or JavaScript) processing
 - eg: display an animated GIF of the thumbnails of the selected object

Security

- The POMME project has adopted the VO early, but its data is still embargoed
- Therefore authentication had to be implemented:
 - The web page and applet requires HTTP basic authentication
 - The image data is protected similarly (Aladin compatible)
 - The TAP access is password-protected via DaCHS (TOPCAT and applet-compatible)

Demo

Perspectives

- Send scripts commands to Aladin (currently forbidden by `x-samp.mostly-harmless=0`)
- Send shape/color with catalog ? (or filters?)
- Authentication dialog in TOPCAT ?
- Load color healpix image in Aladin (currently needs a .glu file)

Acknowledgments

- Pierre Fernique and Thomas Boch (Aladin + Healpix generation)
- Mark Taylor (SAMP, TOPCAT)
- Markus Demleitner (DaCHS)
- Marc Wenger (SIMBAD queries)