

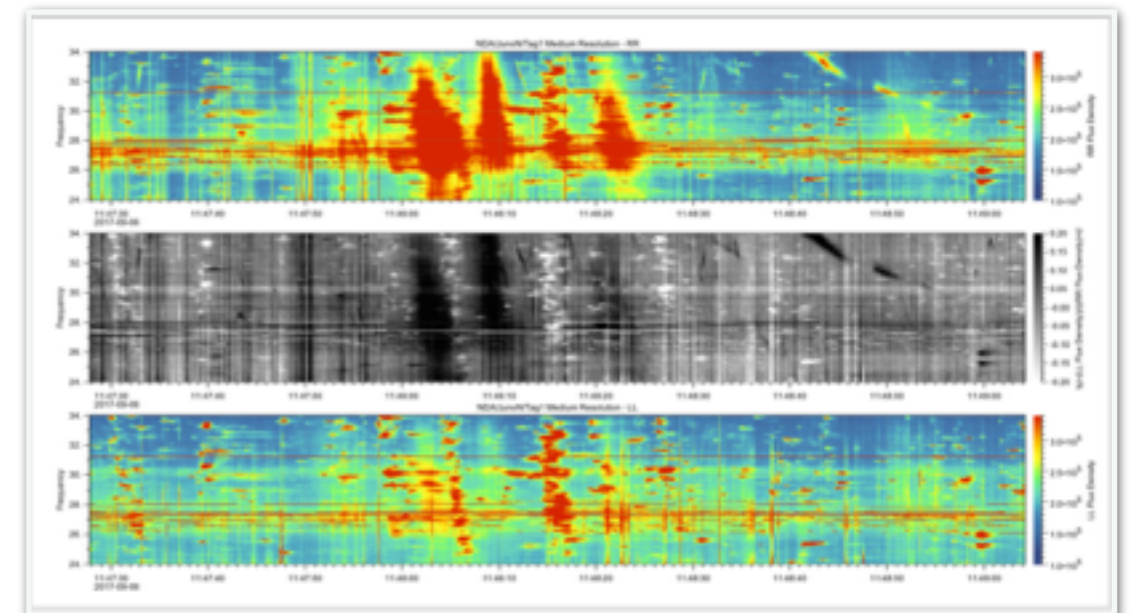
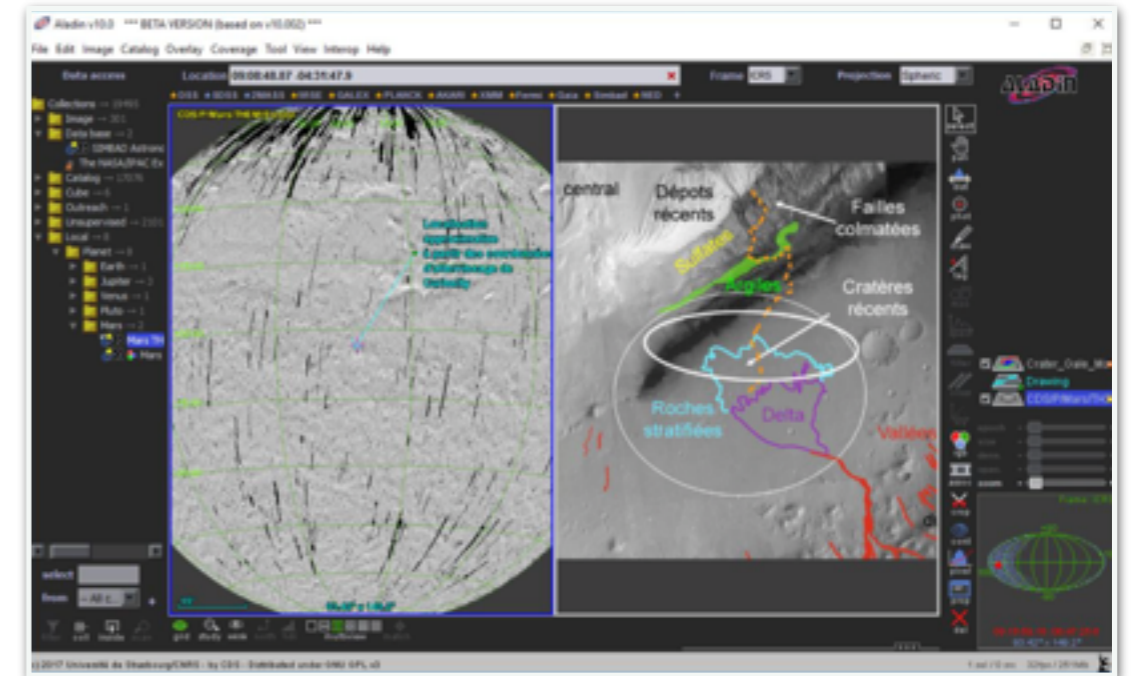
SSIG Closing Remarks

Interop May 2018

B. Cecconi (chair)

Plenary Session

- NASA/PDS archive with XML technologies.
- VESPA project update and IVOA shopping list
- New SSoDNet/Quaero name resolver from IMCCE
- Applications:
 - Planetary images in Aladin with planetary HiPS
 - Low frequency radio astronomy / VO



Splinter Session

- Feedback on EPN-TAP:
 - ESAC (PSA) and CDS (VizieR): similar feedback, large and heterogeneous datasets.
 - CADC: no plan for now, lack of resources
- Datalink in VESPA.
 - planetary ephemeris query
 - cutout services (with das2)
 - context products (e.g., preview)
- EPN-TAP used to harvest external databases in APIS.
Remote DB = JAXA Hisaki EUV spectra
- SSOIS tool from CADC.
Optimized for small bodies, but huge potential, for CADC planetary access

The screenshot displays the APIS search interface. At the top, there are navigation links: Home, What is APIS?, Available data, Search for data (highlighted), Data use policy, Resources, and Login. Below these are search filters for Target (Jupiter), Telescope, Instrument, Observation type, and Filter or aperture. A date interval is set from 2016-05-19 00:42:50 to 2016-05-31 17:40:05. A search button is present, along with 'Reset', 'Clear', and 'Clear date' options. The results section shows 29 results. Two results are visible, each with an 'Observation summary' table, 'Original data' (FITS | JPG), 'Derived products' (Processed data, ID spectrum), and 'Detailed information'.

Observation summary	Original data	Derived products
Target : Jupiter Start date : 2016-05-19 Start time : 00:42:50 Int. time : 60 s Instrument : HISAKI / EXCEED Obs. type : SPECTROIMAGING Grating / slit : DUMBBELL Dataset : exuv.jupiter.mod. 03.20160519. lv.02.vr.00	 FITS JPG	Processed data No data ID spectrum No data
Target : Jupiter Start date : 2016-05-19 Start time : 00:59:14 Int. time : 2509.1924 s Instrument : HST / STIS Obs. type : SPECTROSCOPIC Grating / slit : G140L / S2X0.5 Dataset : ocs06010	 FITS JPG Display with : Aladin / SpecView	Processed data PDF JPG Display with : Aladin ID spectrum No data

Other discussions

- **TDIG**
 - VOEvent: planetary space weather status; improvement discussed in SSIG scope
 - Demo of das2/autoplot, lots of discussion
 - SSIG-related data samples sent to TDIG
- **Apps**
 - T-MOC very appealing!
- **DM**
 - first try on using XSD STC2: not there yet, but activity ignited
 - VO-DML annotation seems interesting. To be tested
 - STC2 StdRefFrames to be extended
- **Semantics**
 - Nomenclatures and UCDs
- **Coffee Breaks**
 - TOPCAT and SAMP
 - prototyping and demos
 - s_region and longitude direction...

Next to come

- Collaboration on Nomenclatures and StdRefFrames with NASA/PDS
- Consolidation of DALI/SODA usage in VESPA
- Continuation of VOEvent developments for PSWS
- **Ongoing:** Support to teams willing to test/implement EPN-TAP on SSIG related data collections