

# SED building & DAL

# SED Builder

USERS



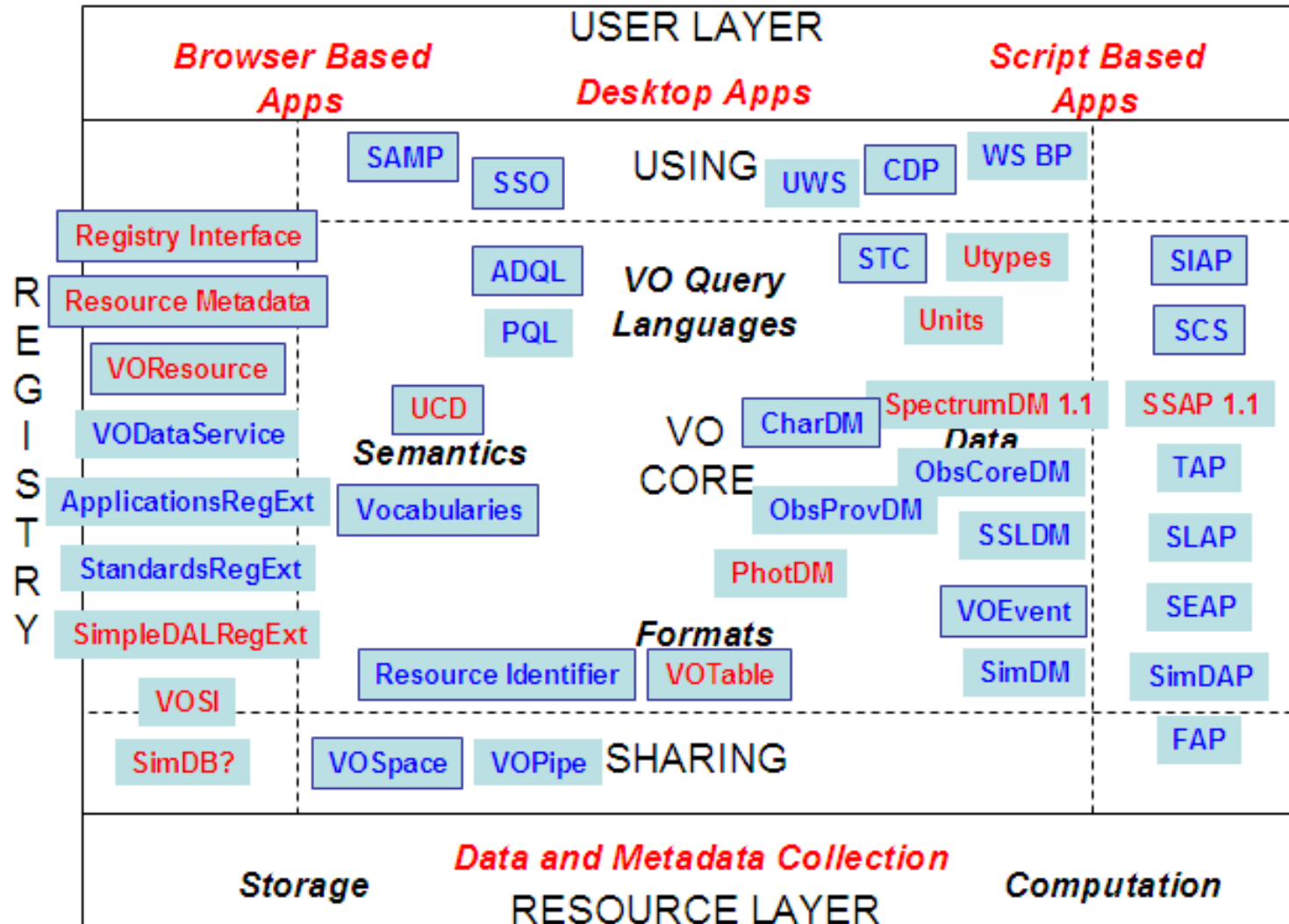
COMPUTERS

REC

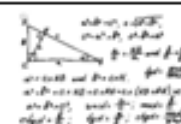
InProgress

REC used

Std to be updated or created



PROVIDERS



# SED builder & DAL

- integrating photometry across a range of energy and a *range of data sources* seems to be the primary activity
- PhotDM seems to be the primary enabling concept
  - effects SpectrumDM -->> SSA

# SED & DAL

- PhotDM
  - effects SourceDM -->> ConeSearch & TAP
  - well, we don't have a SourceDM...
  - but we do have services with sources:  
positions, magnitudes, fluxes, etc.
- need to characterise those mags and fluxes  
with PhotDM

# SED Builder

USERS



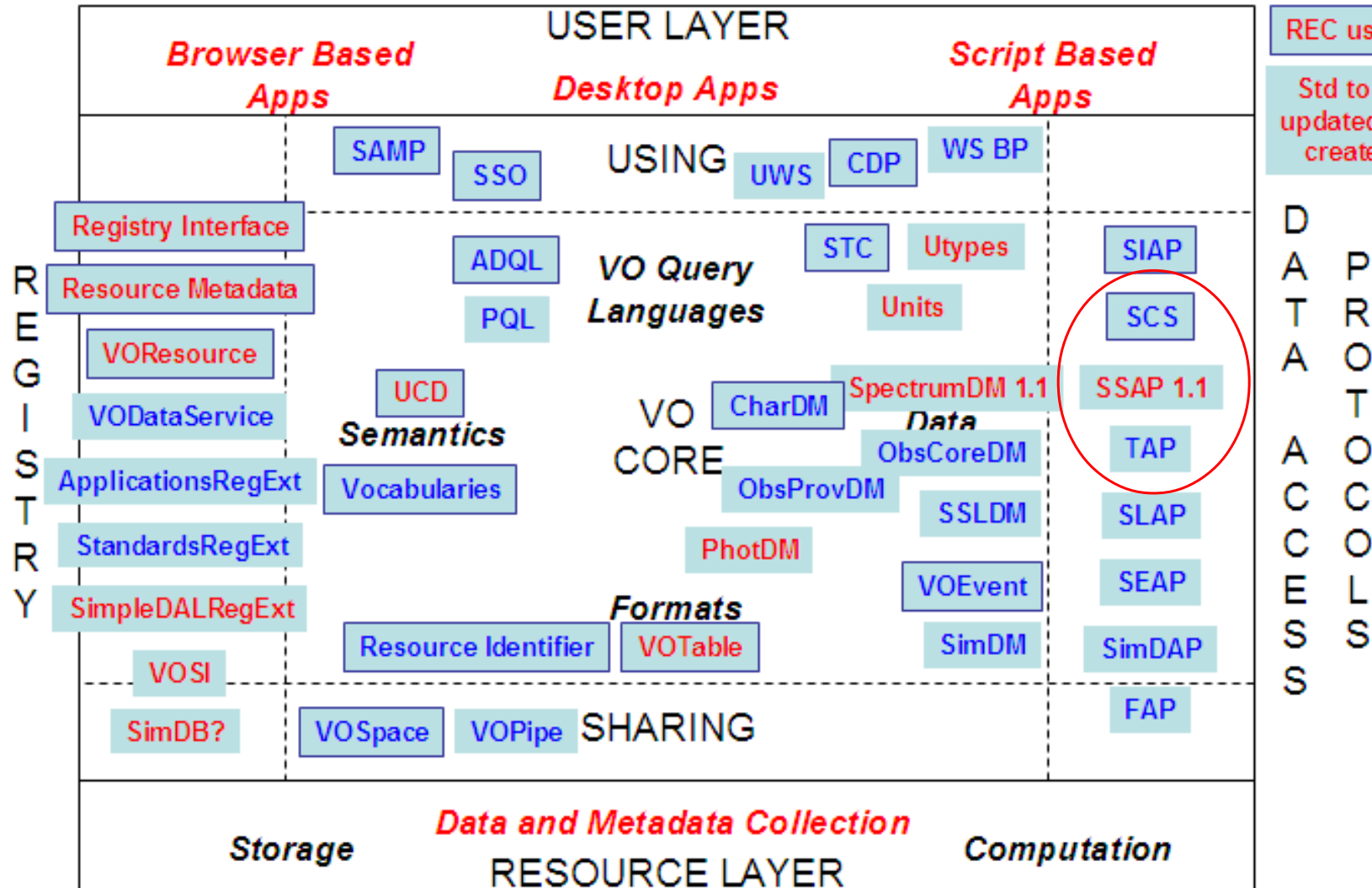
COMPUTERS

REC

InProgress

REC used

Std to be updated or created



PROVIDERS

